

PSMB10 RABBIT PAB

Cat.#: S218857

Product Name: Anti-PSMB10 Rabbit Polyclonal Antibody

Synonyms: LMP10; MECL1; beta2i

UNIPROT ID: P40306 (Gene Accession - BC017198)

Background: The proteasome is a multicatalytic proteinase complex with a highly ordered ring-shaped 20S core structure. The core structure is composed of 4 rings of 28 non-identical subunits; 2 rings are composed of 7 alpha subunits and 2 rings are composed of 7 beta subunits. Proteasomes are distributed throughout eukaryotic cells at a high concentration and cleave peptides in an ATP/ubiquitin-dependent process in a non-lysosomal pathway. An essential function of a modified proteasome, the immunoproteasome, is the processing of class I MHC peptides. This gene encodes a member of the proteasome B-type family, also known as the T1B family, that is a 20S core beta subunit. Proteolytic processing is required to generate a mature subunit. Expression of this gene is induced by gamma interferon, and this gene product replaces catalytic subunit 2 (proteasome beta 7 subunit) in the immunoproteasome.

Immunogen: Fusion protein of human PSMB10

Applications: ELISA, IHC

Recommended Dilutions: IHC: 100-300; ELISA: 5000-10000

Host Species: Rabbit

Clonality: Rabbit Polyclonal

Isotype: Immunogen-specific rabbit IgG

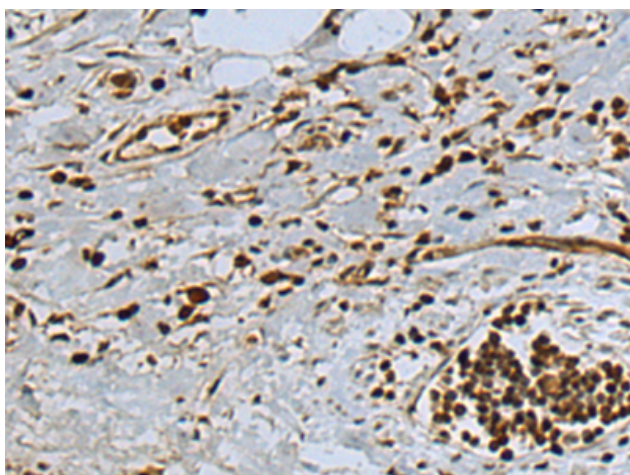
Purification: Antigen affinity purification

Species Reactivity: Human, Mouse, Rat

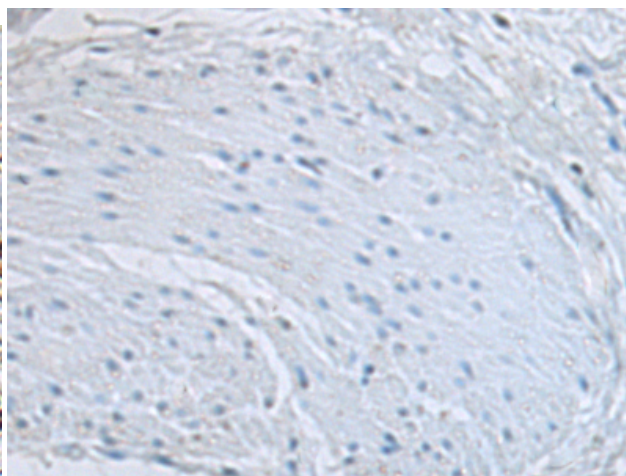
Constituents: PBS (without Mg²⁺ and Ca²⁺), pH 7.4, 150 mM NaCl, 0.05% Sodium Azide and 40% glycerol

Research Areas: Cell Biology, Immunology

Storage & Shipping: Store at -20°C. Avoid repeated freezing and thawing



Immunohistochemistry analysis of paraffin embedded Human gastric cancer tissue using 218857(PSMB10 Antibody) at a dilution of 1/130(Nucleus).



In comparison with the IHC on the left, the same paraffin-embedded Human gastric cancer tissue is first treated with the fusion protein and then with 218857(Anti-PSMB10 Antibody) at dilution 1/130.



Product Description

Pioneering GTPase and Oncogene Product Development since 2010
