

PSGR RABBIT PAB

Cat.#: N225500

Product Name: Anti-PSGR Rabbit pAb

Synonyms: PSGR; HPRAJ; OR52A2; OR51E3P

UNIPROT ID: Q9H255

Background: Probable G protein-coupled receptor that is activated by the short chain fatty acids (SCFA) acetate and propionate. In response to SCFA, may positively regulate renin secretion and increase blood pressure (PubMed:23401498). May also be activated by steroid hormones and regulate cell proliferation (PubMed:19389702). May also function as an olfactory receptor being activated by beta-ionone (PubMed:19389702).

Immunogen: The antiserum was produced against synthesized peptide derived from human OR51E2. AA range:221-270

Applications: WB,ICC/IF,ELISA

Recommended Dilutions: WB: 1/500-1/1000 IF: 1/50-1/200 ELISA: 1/10000

Host Species: Rabbit

Clonality: Rabbit Polyclonal

Clone ID: -

MW: Calculated MW: 35 kDa; Observed MW: 35 kDa

Isotype: IgG

Purification: Affinity Chromatography

Species Reactivity: Human,Rat

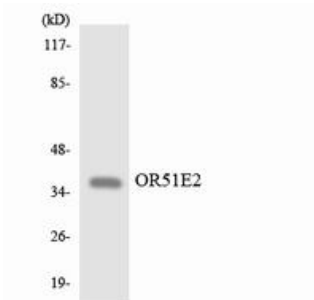
Conjugation: Unconjugated

Modification: Unmodified

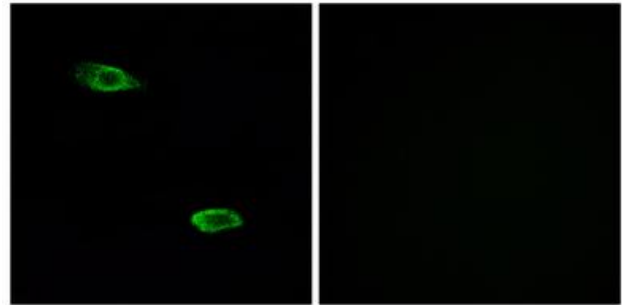
Constituents: PBS (without Mg²⁺ and Ca²⁺), pH 7.3 containing 50% glycerol, 0.5% BSA and 0.02% sodium azide

Research Areas: Neuroscience

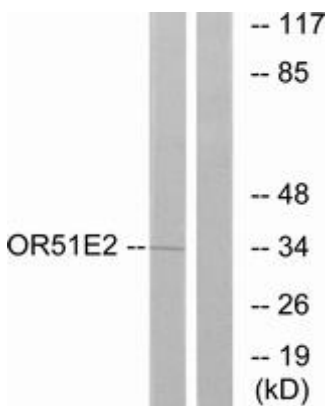
Storage & Shipping: Store at -20°C. Avoid repeated freezing and thawing



Western blot analysis of PSGR in HepG2 lysates using PSGR antibody



Immunofluorescence analysis of PSGR in A549 using PSGR antibody. Sample with blocking peptide on the right.



Western blot analysis of PSGR in Jurkat lysates using PSGR antibody. The lane on the right is blocked with the synthesized peptide.