

PSF1 RABBIT MAB

Cat.#: N262774

Product Name: Anti-PSF1 Rabbit Monoclonal Antibody

Synonyms: GINS complex subunit 1

UNIPROT ID: Q14691

Background: The GINS complex plays an essential role in the initiation of DNA replication, and progression of DNA replication forks. GINS complex seems to bind preferentially to single-stranded DNA. GINS1 is essential for function.

Immunogen: A synthetic peptide of human PSF1

Applications: WB, ICC/IF, IP

Recommended Dilutions: WB: 1/500-1/1000 IF: 1/50-1/200 IP: 1/20

Host Species: Rabbit

Clonality: Rabbit Monoclonal

Clone ID: R04-1A8

MW: Calculated MW: 23 kDa; Observed MW: 23 kDa

Isotype: IgG

Purification: Affinity Purified

Species Reactivity: Human, Mouse, Rat

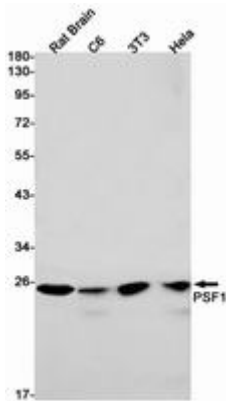
Conjugation: Unconjugated

Modification: Unmodified

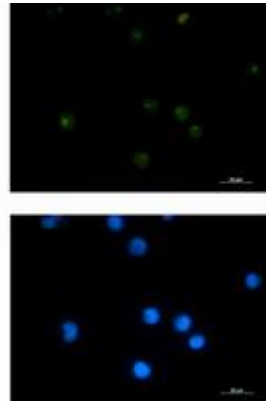
Constituents: PBS (without Mg²⁺ and Ca²⁺), pH 7.3 containing 50% glycerol, 0.5% BSA and 0.02% sodium azide

Research Areas: Epigenetics and Nuclear Signaling

Storage & Shipping: Store at -20°C. Avoid repeated freezing and thawing



Western blot analysis of PSF1 in rat Brain, C6, 3T3, HeLa lysates using PSF1 antibody.



Immunocytochemistry analysis of PSF1 (green) in Jurkat using PSF1 antibody, and DAPI (blue).