

PRXL2B RABBIT PAB

Cat.#: S212142

Product Name: Anti-PRXL2B Rabbit Polyclonal Antibody

Synonyms: Clorf93; FAM213B

UNIPROT ID: Q8TBF2 (Gene Accession - BC022547)

Background: Catalyzes the reduction of prostaglandin-ethanolamide H2 (prostamide H2) to prostamide F(2alpha) with NADPH as proton donor. Also able to reduce prostaglandin H2 to prostaglandin F(2alpha) (By similarity).

Immunogen: Fusion protein of human PRXL2B

Applications: ELISA, WB, IHC

Recommended Dilutions: IHC: 40-200;WB: 200-1000;ELISA: 5000-10000

Host Species: Rabbit

Clonality: Rabbit Polyclonal

Isotype: Immunogen-specific rabbit IgG

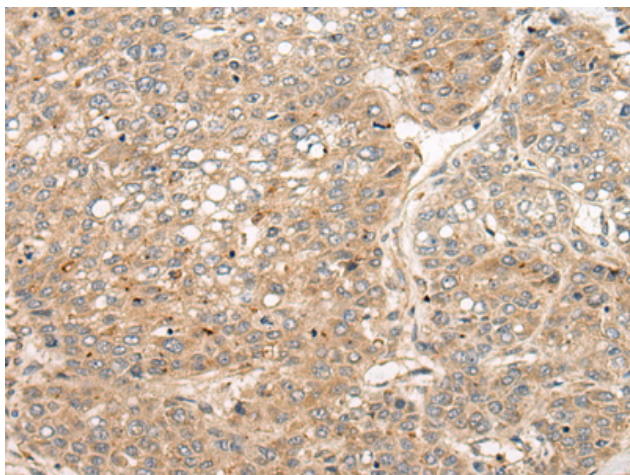
Purification: Antigen affinity purification

Species Reactivity: Human, Mouse, Rat

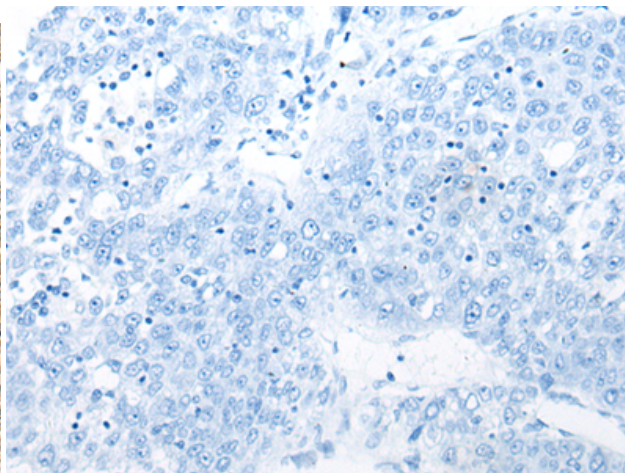
Constituents: PBS (without Mg²⁺ and Ca²⁺), pH 7.4, 150 mM NaCl, 0.05% Sodium Azide and 40% glycerol

Research Areas: Cell Biology

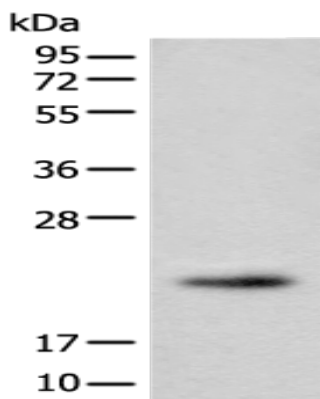
Storage & Shipping: Store at -20°C. Avoid repeated freezing and thawing



Immunohistochemistry analysis of paraffin embedded Human liver cancer tissue using 212142 (PRXL2B Antibody) at a dilution of 1/55 (Cytoplasm).



In comparison with the IHC on the left, the same paraffin-embedded Human liver cancer tissue is first treated with the fusion protein and then with 212142 (Anti-PRXL2B Antibody) at dilution 1/55.



Gel: 12% SDS-PAGE, Lysate: 40 μ g;
Lane: Human fetal brain tissue lysate;
Primary antibody: 212142 (PRXL2B Antibody) at dilution 1/550;
Secondary antibody: Goat anti rabbit IgG at 1/8000 dilution;
Exposure time: 30 seconds