

## PRTFDC1 RABBIT PAB

**Cat.#:** S218191

**Product Name:** Anti-PRTFDC1 Rabbit Polyclonal Antibody

**Synonyms:** HHGP

**UNIPROT ID:** Q9NRG1 (Gene Accession - BC008662)

**Background:** Enables protein homodimerization activity. Predicted to be involved in purine ribonucleoside salvage.

**Immunogen:** Fusion protein of human PRTFDC1

**Applications:** ELISA, WB, IHC

**Recommended Dilutions:** IHC: 150-300;WB: 200-1000;ELISA: 5000-10000

**Host Species:** Rabbit

**Clonality:** Rabbit Polyclonal

**Isotype:** Immunogen-specific rabbit IgG

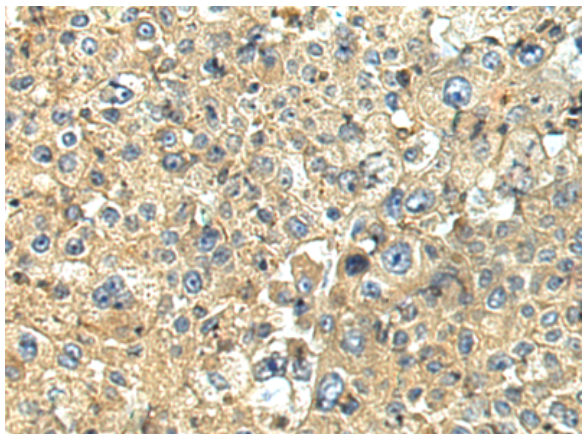
**Purification:** Antigen affinity purification

**Species Reactivity:** Human

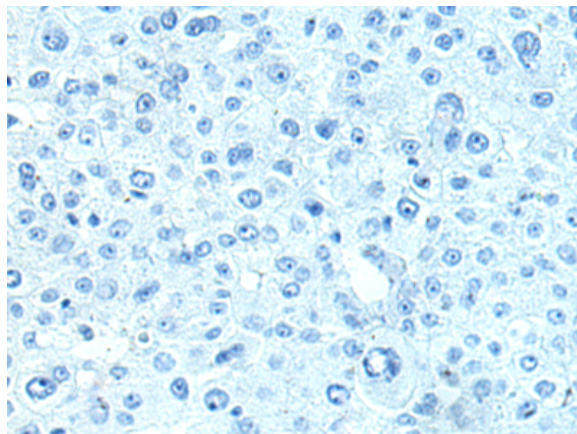
**Constituents:** PBS (without Mg<sup>2+</sup> and Ca<sup>2+</sup>), pH 7.4, 150 mM NaCl, 0.05% Sodium Azide and 40% glycerol

**Research Areas:** Epigenetics and Nuclear Signaling

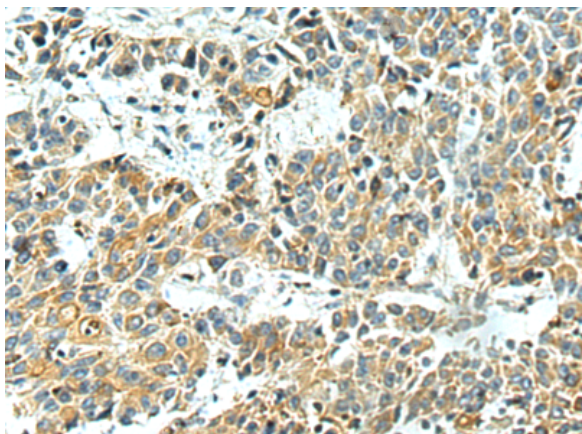
**Storage & Shipping:** Store at -20°C. Avoid repeated freezing and thawing



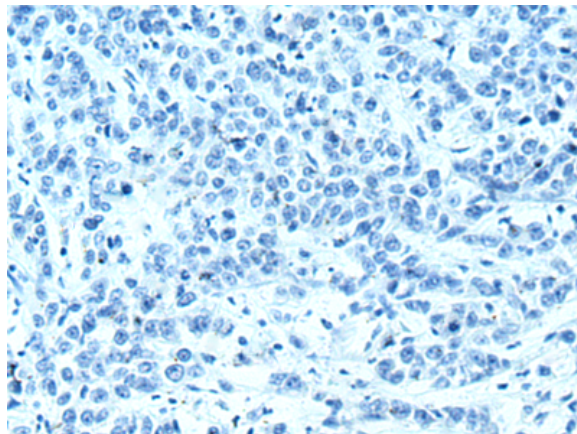
Immunohistochemistry analysis of paraffin embedded Human liver cancer tissue using 218191(PRTFDC1 Antibody) at a dilution of 1/150(Cytoplasm).



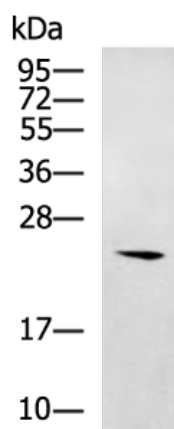
In comparison with the IHC on the left, the same paraffin-embedded Human liver cancer tissue is first treated with the fusion protein and then with 218191(Anti-PRTFDC1 Antibody) at dilution 1/150.



The image on the left is immunohistochemistry of paraffin-embedded Human colorectal cancer tissue using 218191(Anti-PRTFDC1 Antibody) at a dilution of 1/150.



In comparison with the IHC on the left, the same paraffin-embedded Human colorectal cancer tissue is first treated with fusion protein and then with D223908(Anti-PRTFDC1 Antibody) at dilution 1/150.



Gel: 12%SDS-PAGE, Lysate: 40 µg;  
Lane: Human ovarian cancer (granulosa cell tumor) tissue lysate;  
Primary antibody: 218191(PRTFDC1 Antibody) at dilution 1/300;  
Secondary antibody: HRP-conjugated Goat anti rabbit IgG at 1/5000 dilution;  
Exposure time: 90 seconds



# Product Description

Pioneering GTPase and Oncogene Product Development since 2010

---