

## PRSS8 RABBIT MAB

**Cat.#:** N262773

**Product Name:** Anti-PRSS8 Rabbit Monoclonal Antibody

**Synonyms:** CAPI; PROSTASIN

**UNIPROT ID:** Q16651

**Background:** Possesses a trypsin-like cleavage specificity with a preference for poly-basic substrates. Stimulates epithelial sodium channel (ENaC) activity through activating cleavage of the gamma subunits (SCNNIG).

**Immunogen:** Recombinant protein of human PRSS8

**Applications:** WB,IP

**Recommended Dilutions:** WB: 1/500-1/1000 IP: 1/20

**Host Species:** Rabbit

**Clonality:** Rabbit Monoclonal

**Clone ID:** R03-4J4

**MW:** Calculated MW: 36 kDa; Observed MW: 36 kDa

**Isotype:** IgG

**Purification:** Affinity Purified

**Species Reactivity:** Human

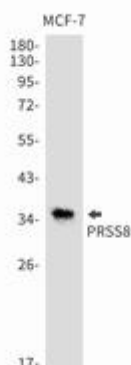
**Conjugation:** Unconjugated

**Modification:** Unmodified

**Constituents:** PBS (without Mg<sup>2+</sup> and Ca<sup>2+</sup>), pH 7.3 containing 50% glycerol, 0.5% BSA and 0.02% sodium azide

**Research Areas:** Cell Biology

**Storage & Shipping:** Store at -20°C. Avoid repeated freezing and thawing



Western blot analysis of PRSS8 in MCF-7 lysates using PRSS8 antibody.



# Product Description

Pioneering GTPase and Oncogene Product Development since 2010

---