

PRPSAP1 RABBIT PAB

Cat.#: S217104

Product Name: Anti-PRPSAP1 Rabbit Polyclonal Antibody

Synonyms: PAP39

UNIPROT ID: Q14558 (Gene Accession - BC009012)

Background: PRPSAP1 (phosphoribosyl pyrophosphate synthetase-associated protein 1), also known as PAP39, is a 356 amino acid ubiquitous protein belonging to the ribose-phosphate pyrophosphokinase family. PRPSAP1 may play a negative regulatory role in 5-phosphoribose 1-diphosphate synthesis and is encoded by a gene mapping to human chromosome 17q25.1.

Immunogen: Fusion protein of human PRPSAP1

Applications: ELISA, IHC

Recommended Dilutions: IHC: 50-200; ELISA: 1000-5000

Host Species: Rabbit

Clonality: Rabbit Polyclonal

Isotype: Immunogen-specific rabbit IgG

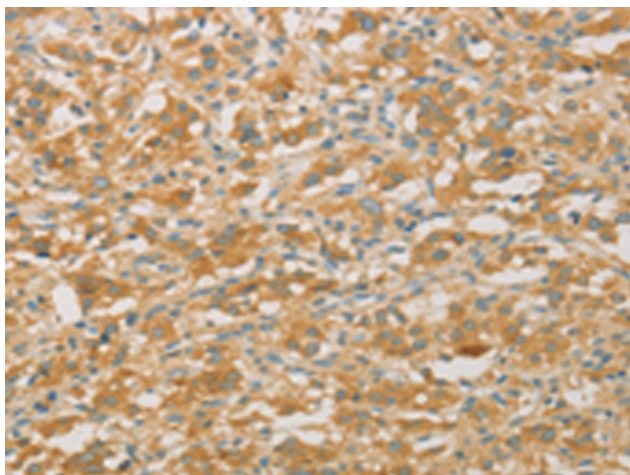
Purification: Antigen affinity purification

Species Reactivity: Human, Mouse, Rat

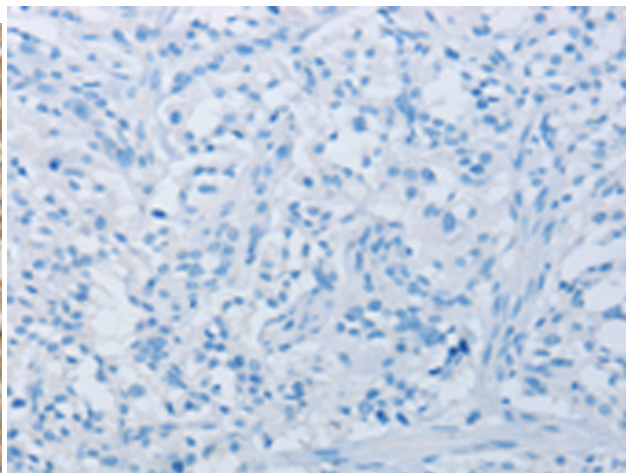
Constituents: PBS (without Mg²⁺ and Ca²⁺), pH 7.4, 150 mM NaCl, 0.05% Sodium Azide and 40% glycerol

Research Areas: Epigenetics and Nuclear Signaling

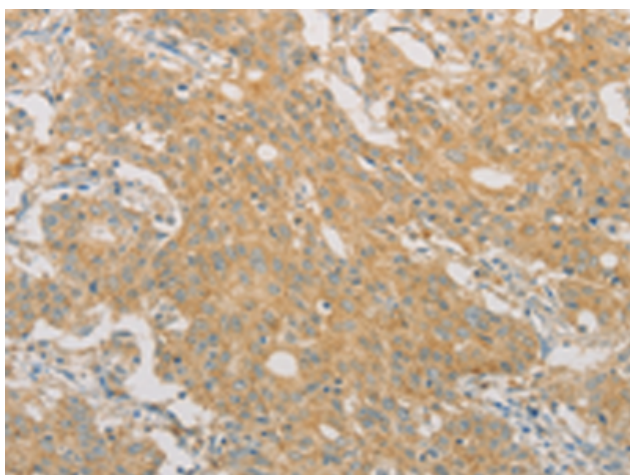
Storage & Shipping: Store at -20°C. Avoid repeated freezing and thawing



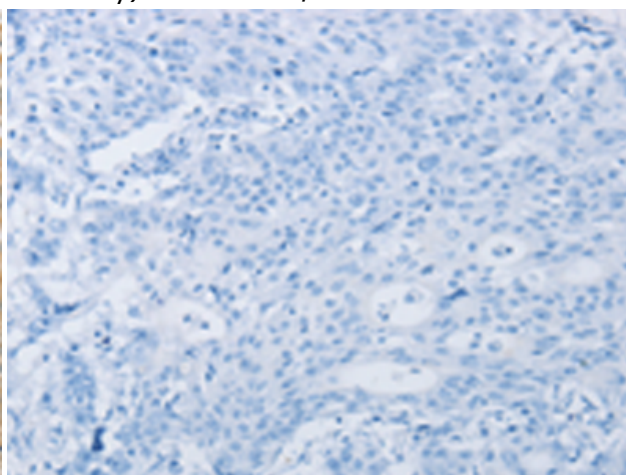
Immunohistochemistry analysis of paraffin embedded Human thyroid cancer tissue using 217104 (PRPSAPI Antibody) at a dilution of 1/50 (Cytoplasm).



In comparison with the IHC on the left, the same paraffin-embedded Human thyroid cancer tissue is first treated with the fusion protein and then with 217104 (Anti-PRPSAPI Antibody) at dilution 1/50.



The image on the left is immunohistochemistry of paraffin-embedded Human gastric cancer tissue using 217104 (Anti-PRPSAPI Antibody) at a dilution of 1/50.



In comparison with the IHC on the left, the same paraffin-embedded Human gastric cancer tissue is first treated with fusion protein and then with D221798 (Anti-PRPSAPI Antibody) at dilution 1/50.