

## PRPH RABBIT PAB

**Cat.#:** S216723

**Product Name:** Anti-PRPH Rabbit Polyclonal Antibody

**Synonyms:** NEF4; PRPH1

**UNIPROT ID:** P41219 (Gene Accession - BC032703 )

**Background:** This gene encodes a cytoskeletal protein found in neurons of the peripheral nervous system. The encoded protein is a type III intermediate filament protein with homology to other cytoskeletal proteins such as desmin, and is a different protein than the peripherin found in photoreceptors. Mutations in this gene have been associated with susceptibility to amyotrophic lateral sclerosis.

**Immunogen:** Fusion protein of human PRPH

**Applications:** ELISA, IHC

**Recommended Dilutions:** IHC: 50–200; ELISA: 5000–10000

**Host Species:** Rabbit

**Clonality:** Rabbit Polyclonal

**Isotype:** Immunogen-specific rabbit IgG

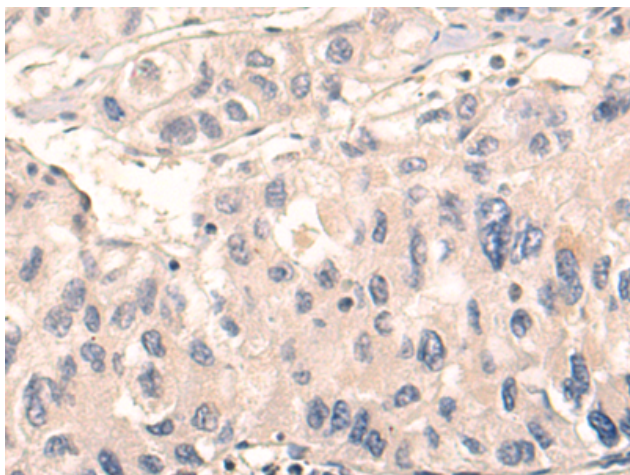
**Purification:** Antigen affinity purification

**Species Reactivity:** Human, Mouse, Rat

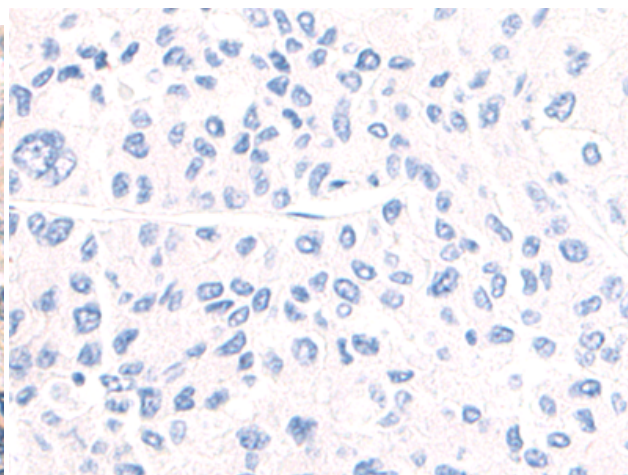
**Constituents:** PBS (without Mg<sup>2+</sup> and Ca<sup>2+</sup>), pH 7.4, 150 mM NaCl, 0.05% Sodium Azide and 40% glycerol

**Research Areas:** Signal Transduction, Neuroscience

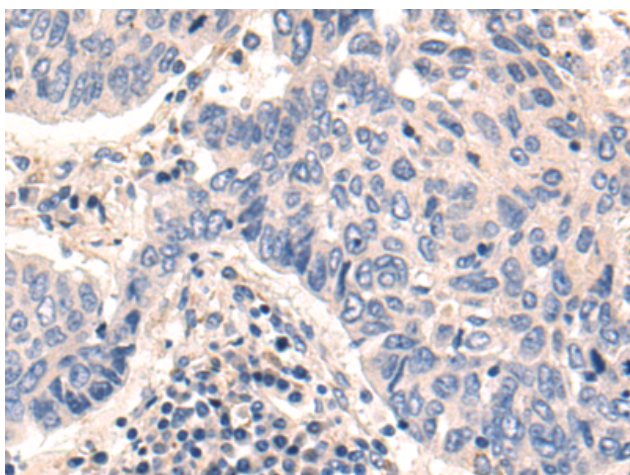
**Storage & Shipping:** Store at -20°C. Avoid repeated freezing and thawing



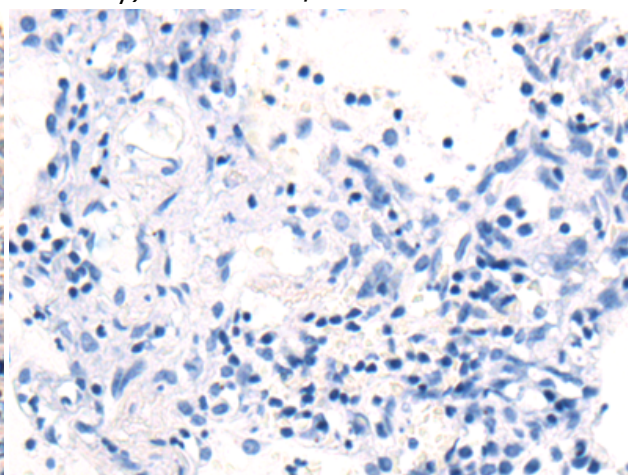
Immunohistochemistry analysis of paraffin embedded Human liver cancer tissue using 216723 (PRPH Antibody) at a dilution of 1/55 (Cytoplasm).



In comparison with the IHC on the left, the same paraffin-embedded Human liver cancer tissue is first treated with the fusion protein and then with 216723 (Anti-PRPH Antibody) at dilution 1/55.



The image on the left is immunohistochemistry of paraffin-embedded Human thyroid cancer tissue using 216723 (Anti-PRPH Antibody) at a dilution of 1/55.



In comparison with the IHC on the left, the same paraffin-embedded Human thyroid cancer tissue is first treated with fusion protein and then with D221127 (Anti-PRPH Antibody) at dilution 1/55.