

PRPF8 RABBIT PAB

Cat.#: S221811

Product Name: Anti-PRPF8 Rabbit Polyclonal Antibody

Synonyms: PRP8; RP13; HPRP8; PRPC8; SNRNP220

UNIPROT ID: Q6P2Q9 (Gene Accession - NP_006436)

Background: Pre-mRNA splicing occurs in 2 sequential transesterification steps. The protein encoded by this gene is a component of both U2- and U12-dependent spliceosomes, and found to be essential for the catalytic step II in pre-mRNA splicing process. It contains several WD repeats, which function in protein-protein interactions. This protein has a sequence similarity to yeast Prp8 protein. This gene is a candidate gene for autosomal dominant retinitis pigmentosa.

Immunogen: Synthetic peptide of human PRPF8

Applications: ELISA, WB, IHC

Recommended Dilutions: IHC: 20-100;WB: 500-2000;ELISA: 5000-10000

Host Species: Rabbit

Clonality: Rabbit Polyclonal

Isotype: Immunogen-specific rabbit IgG

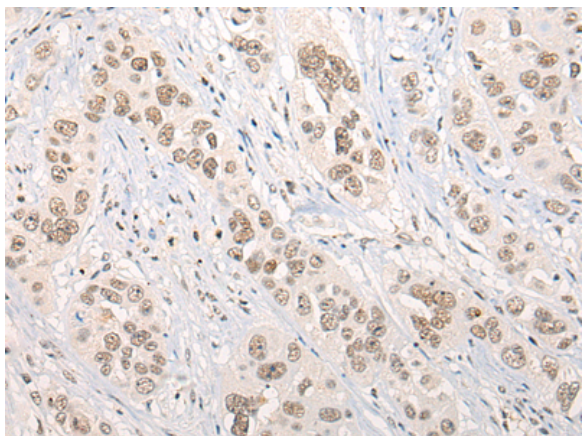
Purification: Antigen affinity purification

Species Reactivity: Human, Mouse

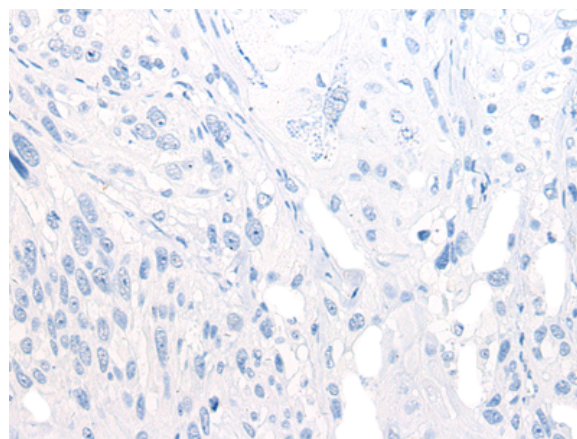
Constituents: PBS (without Mg²⁺ and Ca²⁺), pH 7.4, 150 mM NaCl, 0.05% Sodium Azide and 40% glycerol

Research Areas: Epigenetics and Nuclear Signaling, Neuroscience

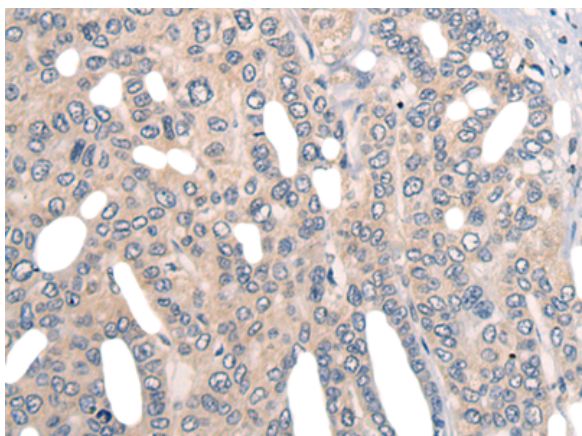
Storage & Shipping: Store at -20°C. Avoid repeated freezing and thawing



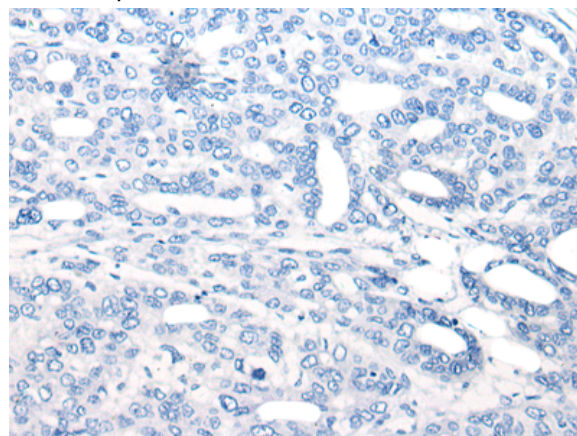
Immunohistochemistry analysis of paraffin embedded Human esophagus cancer tissue using 221811 (PRPF8 Antibody) at a dilution of 1/20 (Nucleus or Cytoplasm).



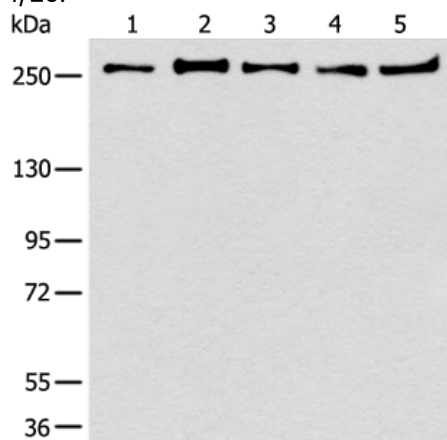
In comparison with the IHC on the left, the same paraffin-embedded Human esophagus cancer tissue is first treated with the synthetic peptide and then with 221811 (Anti-PRPF8 Antibody) at dilution 1/20.



The image on the left is immunohistochemistry of paraffin-embedded Human liver cancer tissue using 221811 (Anti-PRPF8 Antibody) at a dilution of 1/20.



In comparison with the IHC on the left, the same paraffin-embedded Human liver cancer tissue is first treated with synthetic peptide and then with D263565 (Anti-PRPF8 Antibody) at dilution 1/20.



Gel: 6% SDS-PAGE, Lysate: 40 µg;
 Lane 1-5: 293T, K562, Raji, HeLa and NIH/3T3 cell lysates;
 Primary antibody: 221811 (PRPF8 Antibody) at dilution 1/600;
 Secondary antibody: Goat anti rabbit IgG at 1/8000 dilution;
 Exposure time: 50 seconds



Product Description

Pioneering GTPase and Oncogene Product Development since 2010
