

PRPF8 RABBIT MAB

Cat.#: N262772

Product Name: Anti-PRPF8 Rabbit Monoclonal Antibody

Synonyms: HPRP8; p220; PRP8; PRPC8; Prpf8; RP13; SNRNP220

UNIPROT ID: Q6P2Q9

Background: Central component of the spliceosome, which may play a role in aligning the pre-mRNA 5'- and 3'-exons for ligation. Interacts with U5 snRNA, and with pre-mRNA 5'-splice sites in B spliceosomes and 3'-splice sites in C spliceosomes.

Immunogen: A synthetic peptide of human PRPF8

Applications: WB,IHC-P

Recommended Dilutions: WB: 1/500-1/1000 IHC: 1/50-1/100

Host Species: Rabbit

Clonality: Rabbit Monoclonal

Clone ID: R06-117

MW: Calculated MW: 274 kDa; Observed MW: 274 kDa

Isotype: IgG

Purification: Affinity Purified

Species Reactivity: Human

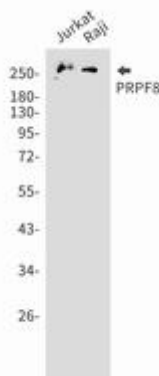
Conjugation: Unconjugated

Modification: Unmodified

Constituents: PBS (without Mg²⁺ and Ca²⁺), pH 7.3 containing 50% glycerol, 0.5% BSA and 0.02% sodium azide

Research Areas: Epigenetics and Nuclear Signaling

Storage & Shipping: Store at -20°C. Avoid repeated freezing and thawing



Western blot analysis of PRPF8 in Jurkat, Raji lysates using PRPF8 antibody.



Product Description

Pioneering GTPase and Oncogene Product Development since 2010
