

## PRPF3 RABBIT PAB

**Cat.#:** S218906

**Product Name:** Anti-PRPF3 Rabbit Polyclonal Antibody

**Synonyms:** PRP3; RP18; HPRP3; Prp3p; HPRP3P; SNRNP90

**UNIPROT ID:** O43395 (Gene Accession - BC000184 )

**Background:** The removal of introns from nuclear pre-mRNAs occurs on complexes called spliceosomes, which are made up of 4 small nuclear ribonucleoprotein (snRNP) particles and an undefined number of transiently associated splicing factors. This gene product is one of several proteins that associate with U4 and U6 snRNPs. Mutations in this gene are associated with retinitis pigmentosa-18.

**Immunogen:** Fusion protein of human PRPF3

**Applications:** ELISA, WB, IHC

**Recommended Dilutions:** IHC: 30-150;WB: 1000-5000;ELISA: 5000-10000

**Host Species:** Rabbit

**Clonality:** Rabbit Polyclonal

**Isotype:** Immunogen-specific rabbit IgG

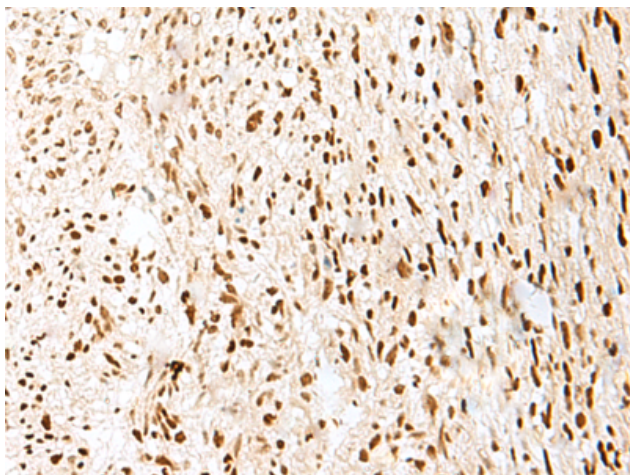
**Purification:** Antigen affinity purification

**Species Reactivity:** Human, Mouse

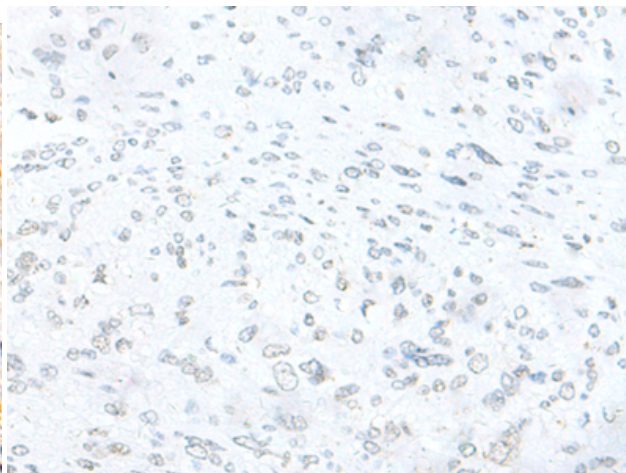
**Constituents:** PBS (without Mg<sup>2+</sup> and Ca<sup>2+</sup>), pH 7.4, 150 mM NaCl, 0.05% Sodium Azide and 40% glycerol

**Research Areas:** Epigenetics and Nuclear Signaling, Neuroscience

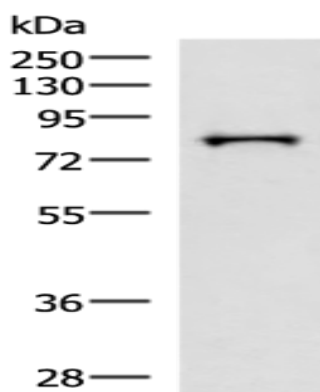
**Storage & Shipping:** Store at -20°C. Avoid repeated freezing and thawing



Immunohistochemistry analysis of paraffin embedded Human liver cancer tissue using 218906 (PRPF3 Antibody) at a dilution of 1/35 (Nucleus).



In comparison with the IHC on the left, the same paraffin-embedded Human liver cancer tissue is first treated with the fusion protein and then with 218906 (Anti-PRPF3 Antibody) at dilution 1/35.



Gel: 8% SDS-PAGE, Lysate: 40  $\mu$ g;  
Lane: HepG2 cell lysate;  
Primary antibody: 218906 (PRPF3 Antibody) at dilution 1/2000;  
Secondary antibody: HRP-conjugated Goat anti rabbit IgG at 1/5000 dilution;  
Exposure time: 1 second