

PRPF19 RABBIT PAB

Cat.#: S219532

Product Name: Anti-PRPF19 Rabbit Polyclonal Antibody

Synonyms: PSO4; SNEV; PRP19; UBOX4; hPSO4; NMP200

UNIPROT ID: Q9UMS4 (Gene Accession - BC008719)

Background: PSO4 is the human homolog of yeast Pso4, a gene essential for cell survival and DNA repair (Beck et al., 2008 [PubMed 18263876]).

Immunogen: Fusion protein of human PRPF19

Applications: ELISA, WB, IHC

Recommended Dilutions: IHC: 50-200;WB: 500-2000;ELISA: 5000-10000

Host Species: Rabbit

Clonality: Rabbit Polyclonal

Isotype: Immunogen-specific rabbit IgG

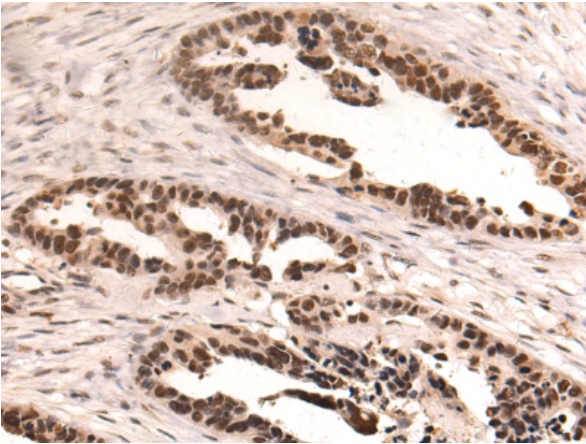
Purification: Antigen affinity purification

Species Reactivity: Human, Mouse, Rat

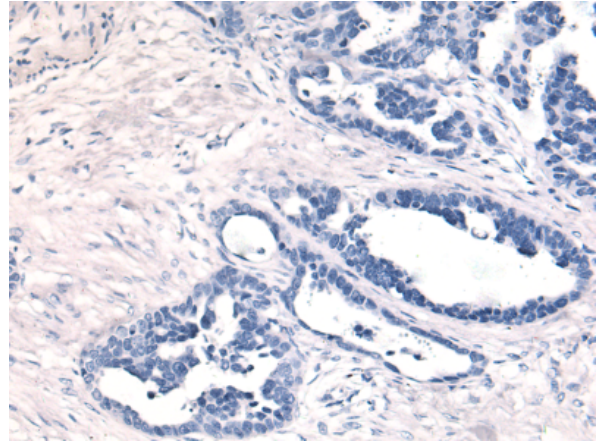
Constituents: PBS (without Mg²⁺ and Ca²⁺), pH 7.4, 150 mM NaCl, 0.05% Sodium Azide and 40% glycerol

Research Areas: Epigenetics and Nuclear Signaling

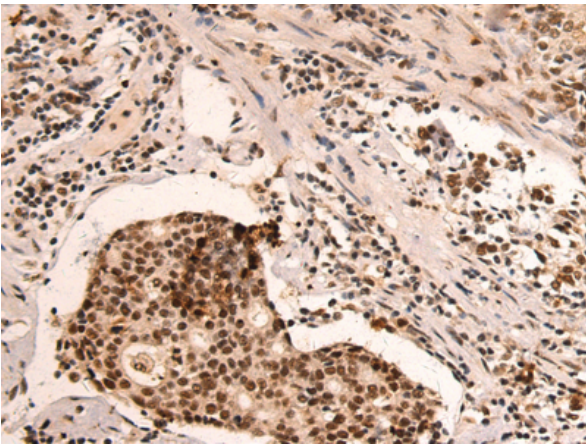
Storage & Shipping: Store at -20°C. Avoid repeated freezing and thawing



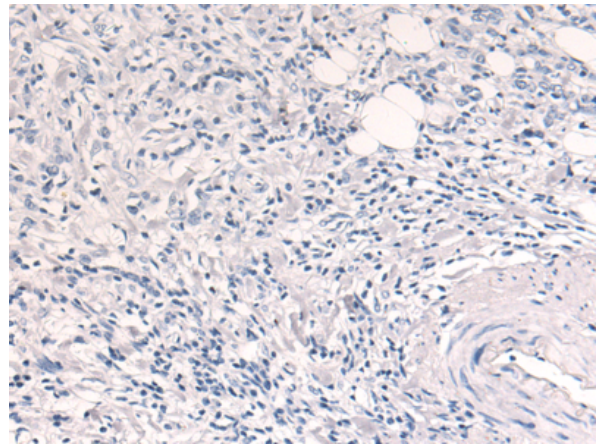
Immunohistochemistry analysis of paraffin embedded Human colorectal cancer tissue using 219532 (PRPF19 Antibody) at a dilution of 1/70 (Nucleus).



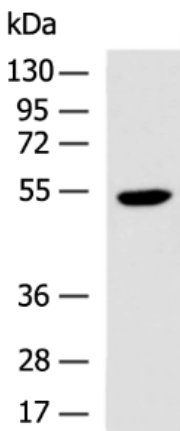
In comparison with the IHC on the left, the same paraffin-embedded Human colorectal cancer tissue is first treated with the fusion protein and then with 219532 (Anti-PRPF19 Antibody) at dilution 1/70.



The image on the left is immunohistochemistry of paraffin-embedded Human gastric cancer tissue using 219532 (Anti-PRPF19 Antibody) at a dilution of 1/70.



In comparison with the IHC on the left, the same paraffin-embedded Human gastric cancer tissue is first treated with fusion protein and then with D227544 (Anti-PRPF19 Antibody) at dilution 1/70.



Gel: 8% SDS-PAGE, Lysate: 40 µg;
Lane: NIH/3T3 cell lysate;
Primary antibody: 219532 (PRPF19 Antibody) at dilution 1/500;
Secondary antibody: HRP-conjugated Goat anti rabbit IgG at 1/5000 dilution;
Exposure time: 15 seconds



Product Description

Pioneering GTPase and Oncogene Product Development since 2010
