

## PROTEIN CASP RABBIT MAB

**Cat.#:** N263509

**Product Name:** Anti-Protein CASP Rabbit Monoclonal Antibody

**Synonyms:** CDP; CUX; p75; CASP; CDPI; COY1; Clox; GDDI; p100; p110; p200; CUTLI; GOLIM6; CDP/Cut; Cux/CDP; Nbla10317

**UNIPROT ID:** Q13948

**Background:** May be involved in intra-Golgi retrograde transport.

**Immunogen:** Recombinant protein of human Protein CASP

**Applications:** WB, ICC/IF, IP

**Recommended Dilutions:** WB: 1/500-1/1000 IF: 1/50-1/200 IP: 1/20

**Host Species:** Rabbit

**Clonality:** Rabbit Monoclonal

**Clone ID:** R03-5F8

**MW:** Calculated MW: 77 kDa; Observed MW: 77 kDa

**Isotype:** IgG

**Purification:** Affinity Purified

**Species Reactivity:** Human, Mouse, Rat

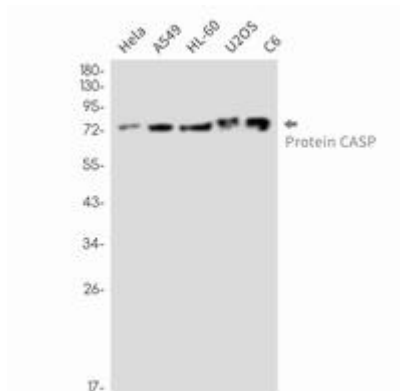
**Conjugation:** Unconjugated

**Modification:** Unmodified

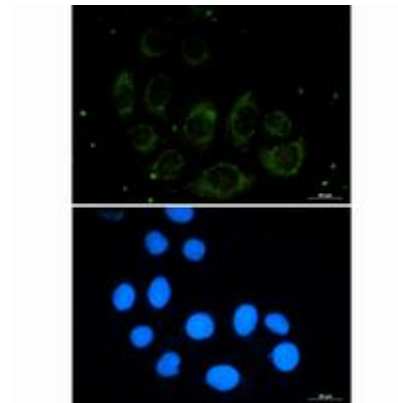
**Constituents:** PBS (without Mg<sup>2+</sup> and Ca<sup>2+</sup>), pH 7.3 containing 50% glycerol, 0.5% BSA and 0.02% sodium azide

**Research Areas:** -

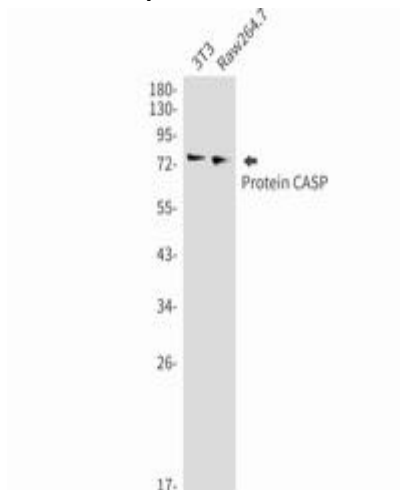
**Storage & Shipping:** Store at -20°C. Avoid repeated freezing and thawing



Western blot analysis of Protein CASP in HeLa, A549, HL-60, U2OS, C6 lysates using Protein CASP antibody



Immunocytochemistry analysis of Protein CASP (green) in A549 using Protein CASP antibody, and DAPI (blue).



Western blot analysis of Protein CASP in 3T3, Raw264.7 lysates using Protein CASP antibody.