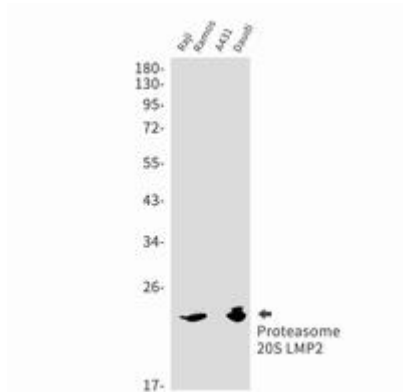
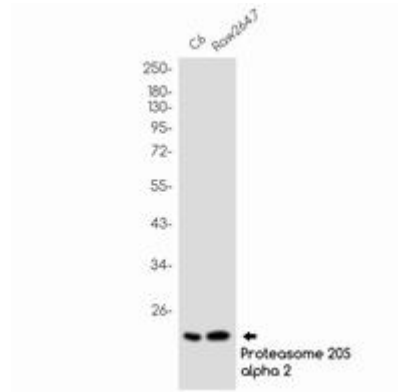


PROTEASOME BETA 9 RABBIT MAB**Cat.#:** N262766**Product Name:** Anti-Proteasome beta 9 Rabbit Monoclonal Antibody**Synonyms:** Beta1i; LMP2; PSMB 9; PSMB6i; PSMB9; RING12**UNIPROT ID:** P28065**Background:** The proteasome is a multicatalytic proteinase complex which is characterized by its ability to cleave peptides with Arg, Phe, Tyr, Leu, and Glu adjacent to the leaving group at neutral or slightly basic pH. The proteasome has an ATP-dependent proteolytic activity.**Immunogen:** A synthetic peptide of human Proteasome 20S LMP2**Applications:** WB, ICC/IF**Recommended Dilutions:** WB: 1/500-1/1000 IF: 1/50-1/200**Host Species:** Rabbit**Clonality:** Rabbit Monoclonal**Clone ID:** R04-9C8**MW:** Calculated MW: 23 kDa; Observed MW: 23 kDa**Isotype:** IgG**Purification:** Affinity Purified**Species Reactivity:** Human, Mouse, Rat**Conjugation:** Unconjugated**Modification:** Unmodified**Constituents:** PBS (without Mg²⁺ and Ca²⁺), pH 7.3 containing 50% glycerol, 0.5% BSA and 0.02% sodium azide**Research Areas:** Cell Biology**Storage & Shipping:** Store at -20°C. Avoid repeated freezing and thawing



Western blot analysis of Proteasome 20S LMP2 in Raji, Ramos, A431, Daudi lysates using Proteasome 20S LMP2 antibody.



Western blot analysis of Proteasome 20S LMP2 in C6, Raw264.7 lysates using Proteasome beta 9 antibody.