

PROTEASOME BETA 8 (3G3) MOUSE MAB

Cat.#: N261199

Product Name: Anti-Proteasome beta 8 (3G3) Mouse Monoclonal Antibody

Synonyms: PSMB8; LMP7; PSMB5i; RING10; Y2; Proteasome subunit beta type-8; Low molecular mass protein 7; Macropain subunit C13; Multicatalytic endopeptidase complex subunit C13; Proteasome component C13; Proteasome subunit beta-5i; Really interesting

UNIPROT ID: P28062

Background: The proteasome is a multicatalytic proteinase complex which is characterized by its ability to cleave peptides with Arg, Phe, Tyr, Leu, and Glu adjacent to the leaving group at neutral or slightly basic pH. The proteasome has an ATP-dependent proteolytic activity.

Immunogen: Purified recombinant fragment of human PSMB8 expressed in E. Coli.

Applications: WB,IHC-F,IHC-P,ICC/IF

Recommended Dilutions: WB: 1/500-1/1000 IHC: 1/50-1/100 IF: 1/50-1/200

Host Species: Mouse

Clonality: Mouse Monoclonal

Clone ID: 3G3-C1-E2

MW: Calculated MW: 30 kDa; Observed MW: 30 kDa

Isotype: IgG1

Purification: Ascitic Fluid

Species Reactivity: Human,Rat

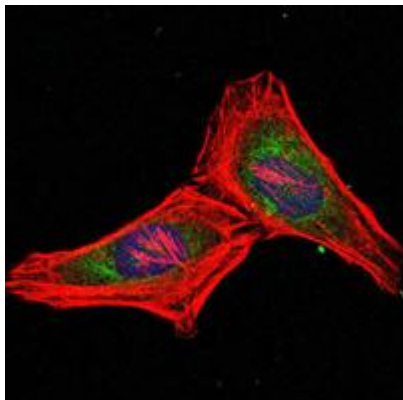
Conjugation: Unconjugated

Modification: Unmodified

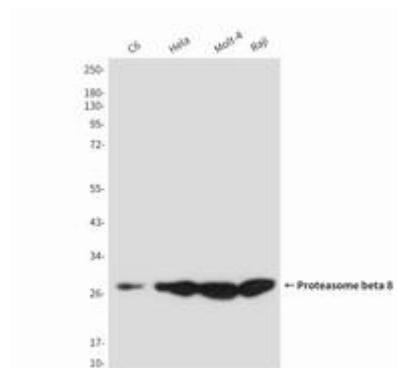
Constituents: PBS (without Mg²⁺ and Ca²⁺), pH 7.3 containing 50% glycerol, 0.5% BSA and 0.02% sodium azide

Research Areas: Cell Biology

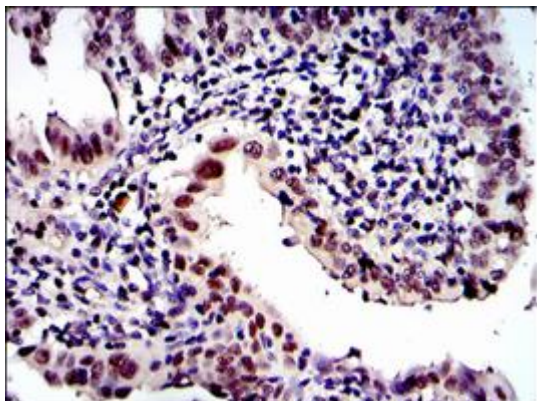
Storage & Shipping: Store at -20°C. Avoid repeated freezing and thawing



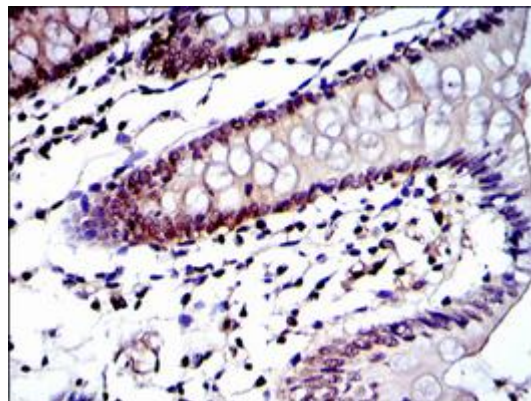
Immunofluorescence analysis of Proteasome beta 8 (3G3) in Hela cells using PSMB8 antibody (green), and DAPI (blue)



Western blot analysis of PSMB8/LMP7 in C6, Hela, Molt4 and Raji lysates using PSMB8/LMP7 antibody.



Immunohistochemistry analysis of paraffin-embedded intima cancer tissues using PSMB8 antibody with DAB staining. High-pressure and temperature Sodium Citrate pH 6.0 was used for antigen retrieval.



Immunohistochemistry analysis of paraffin-embedded colon tissues using Proteasome beta 8 (3G3) antibody. High-pressure and temperature Sodium Citrate pH 6.0 was used for antigen retrieval.