

PROTEASOME ALPHA 2 RABBIT MAB

Cat.#: N262765

Product Name: Anti-Proteasome alpha 2 Rabbit Monoclonal Antibody

Synonyms: HC3; PMSA2; Proteasome component C3; PSC2; PSC3; psmA2

UNIPROT ID: P25787

Background: The proteasome is a multicatalytic proteinase complex which is characterized by its ability to cleave peptides with Arg, Phe, Tyr, Leu, and Glu adjacent to the leaving group at neutral or slightly basic pH.

Immunogen: A synthetic peptide of human Proteasome 20S alpha 2

Applications: WB,IHC-F,IHC-P,ICC/IF

Recommended Dilutions: WB: 1/500-1/1000 IHC: 1/50-1/100 IF: 1/50-1/200

Host Species: Rabbit

Clonality: Rabbit Monoclonal

Clone ID: R09-4H8

MW: Calculated MW: 26 kDa; Observed MW: 26 kDa

Isotype: IgG

Purification: Affinity Purified

Species Reactivity: Human,Mouse,Rat

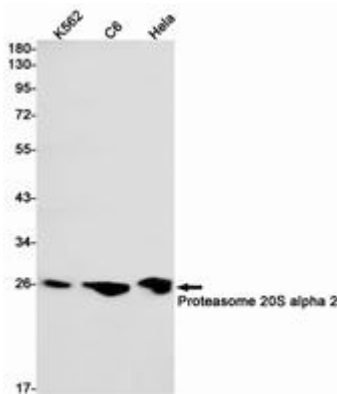
Conjugation: Unconjugated

Modification: Unmodified

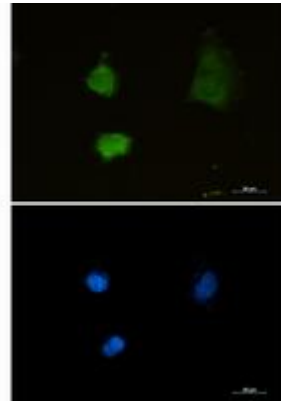
Constituents: PBS (without Mg²⁺ and Ca²⁺), pH 7.3 containing 50% glycerol, 0.5% BSA and 0.02% sodium azide

Research Areas: Cell Biology

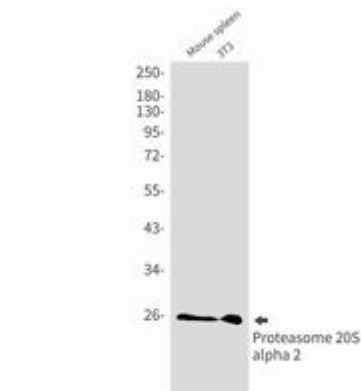
Storage & Shipping: Store at -20°C. Avoid repeated freezing and thawing



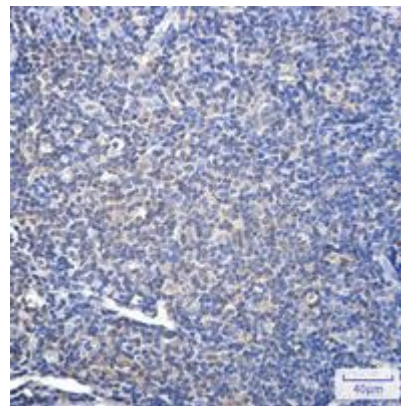
Western blot analysis of Proteasome 20S alpha 2 in K562, C6, HeLa lysates using Proteasome 20S alpha 2 antibody



Immunocytochemistry analysis of Proteasome alpha 2 (green) in U87-MG using Proteasome alpha 2 antibody, and DAPI (blue).



Western blot analysis of Proteasome 20S alpha 2 in mouse spleen, 3T3 lysates using Proteasome 20S alpha 2 antibody.



Immunohistochemistry analysis of paraffin-embedded Human tonsil using Proteasome 20S alpha 2 antibody. High-pressure and temperature Sodium Citrate pH 6.0 was used for antigen retrieval.