

PROSTATE SPECIFIC ANTIGEN MOUSE MAB

Cat.#: N261202

Product Name: Anti-Prostate Specific Antigen Mouse Monoclonal Antibody

Synonyms: KLK3; APS; Prostate-specific antigen; PSA; Gamma-seminoprotein; Semin; Kallikrein-3; P-30 antigen; Semenogelase

UNIPROT ID: P07288

Background: PSA/KLK3 is a member of the glandular kallikrein subfamily of serine proteases. Upon cleavage of 7 amino-terminal amino acids, it is activated to liquefy semen in the seminal coagulum. Although PSA/KLK3 is produced in healthy individuals, investigators have found abnormally high levels in the blood of men with advanced prostate cancer.

Immunogen: Purified recombinant fragment of human KLK3 expressed in E. Coli.

Applications: WB,FC

Recommended Dilutions: WB: 1/500-1/1000 FC: 1/50-1/100

Host Species: Mouse

Clonality: Mouse Monoclonal

Clone ID: 8A12

MW: Calculated MW: 29 kDa; Observed MW: 37 kDa

Isotype: IgG1

Purification: Ascitic Fluid

Species Reactivity: Human

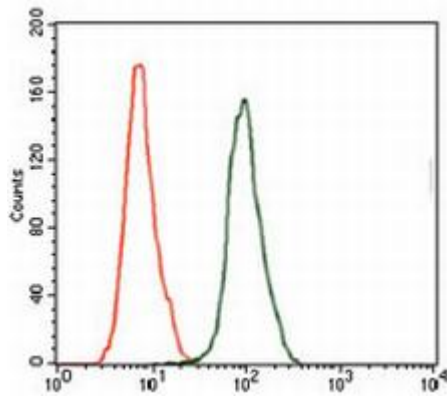
Conjugation: Unconjugated

Modification: Unmodified

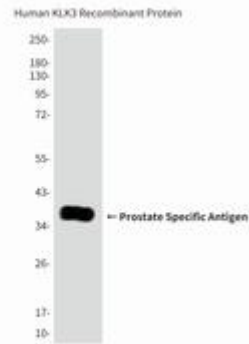
Constituents: PBS (without Mg²⁺ and Ca²⁺), pH 7.3 containing 50% glycerol, 0.5% BSA and 0.02% sodium azide

Research Areas: Neuroscience

Storage & Shipping: Store at -20°C. Avoid repeated freezing and thawing



Flow Cytometry analysis of HeLa cells stained with KLK3 antibody (green) and negative control (red).



Western blot analysis of Prostate Specific Antigen in Human KLK3 (AA: 1092) recombinant protein using Prostate Specific Antigen antibody.