

## PROSTATE SECRETORY PROTEIN RABBIT PAB

**Cat.#:** N225982

**Product Name:** Anti-Prostate Secretory Protein Rabbit pAb

**Synonyms:** MSP; PSP; IGBF; MSPB; PN44; PRPS; HPC13; PSP57; PSP94; PSP-94

**UNIPROT ID:** P08118

**Background:** Specific receptors for this protein are found on spermatozoa and in the prostate.

**Immunogen:** A synthesized peptide derived from human Prostate Secretory Protein/PSP

**Applications:** WB,IHC-P,IP

**Recommended Dilutions:** WB: 1/500-1/1000 IHC: 1/50-1/100 IP: 1/20

**Host Species:** Rabbit

**Clonality:** Rabbit Polyclonal

**Clone ID:** -

**MW:** Calculated MW: 13 kDa; Observed MW: 13 kDa

**Isotype:** IgG

**Purification:** Affinity Chromatography

**Species Reactivity:** Human

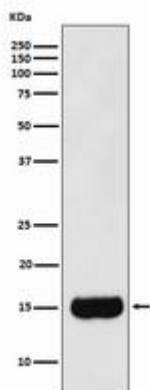
**Conjugation:** Unconjugated

**Modification:** Unmodified

**Constituents:** PBS (without Mg<sup>2+</sup> and Ca<sup>2+</sup>), pH 7.3 containing 50% glycerol, 0.5% BSA and 0.02% sodium azide

**Research Areas:** Tags & Cell Markers

**Storage & Shipping:** Store at -20°C. Avoid repeated freezing and thawing



Western blot analysis of Prostate Secretory Protein/PSP in Human prostate cancer lysates using Prostate Secretory Protein antibody.



# Product Description

Pioneering GTPase and Oncogene Product Development since 2010

---