

## PROSTAGLANDIN D SYNTHASE RABBIT MAB

**Cat.#:** N262763

**Product Name:** Anti-Prostaglandin D Synthase Rabbit Monoclonal Antibody

**Synonyms:** PDS; PGD2; PGDS; LPGDS; PGDS2; L-PGDS

**UNIPROT ID:** P41222

**Background:** Catalyzes the conversion of PGH<sub>2</sub> to PGD<sub>2</sub>, a prostaglandin involved in smooth muscle contraction/relaxation and a potent inhibitor of platelet aggregation. Involved in a variety of CNS functions, such as sedation, NREM sleep and PGE<sub>2</sub>-induced allodynia, and may have an anti-apoptotic role in oligodendrocytes. Binds small non-substrate lipophilic molecules, including biliverdin, bilirubin, retinal, retinoic acid and thyroid hormone, and may act as a scavenger for harmful hydrophobic molecules and as a secretory retinoid and thyroid hormone transporter. Possibly involved in development and maintenance of the blood-brain, blood-retina, blood-aqueous humor and blood-Tis barrier. It is likely to play important roles in both maturation and maintenance of the central nervous system and male reproductive system.

**Immunogen:** A synthetic peptide of human Prostaglandin D Synthase

**Applications:** WB,IHC-F,IHC-P,ICC/IF

**Recommended Dilutions:** WB: 1/500-1/1000 IHC: 1/50-1/100 IF: 1/50-1/200

**Host Species:** Rabbit

**Clonality:** Rabbit Monoclonal

**Clone ID:** R06-1C5

**MW:** Calculated MW: 21 kDa; Observed MW: 26 kDa

**Isotype:** IgG

**Purification:** Affinity Purified

**Species Reactivity:** Human,Mouse,Rat

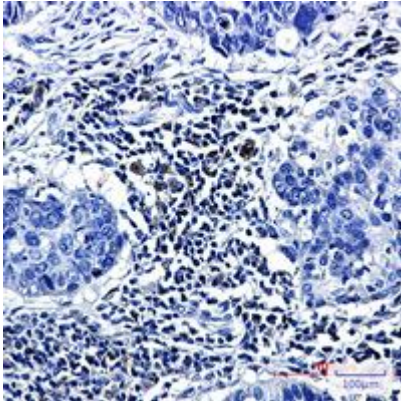
**Conjugation:** Unconjugated

**Modification:** Unmodified

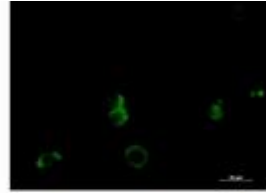
**Constituents:** PBS (without Mg<sup>2+</sup> and Ca<sup>2+</sup>), pH 7.3 containing 50% glycerol, 0.5% BSA and 0.02% sodium azide

**Research Areas:** Signal Transduction

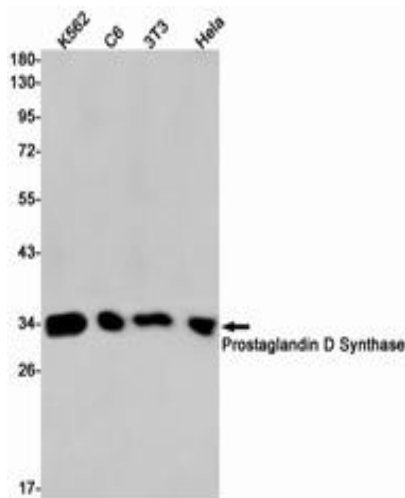
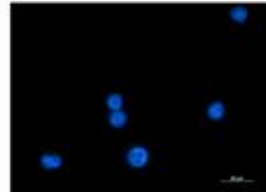
**Storage & Shipping:** Store at -20°C. Avoid repeated freezing and thawing



Immunohistochemistry analysis of paraffin-embedded Human lung cancer tissue using Prostaglandin D Synthase antibody. High-pressure and temperature Sodium Citrate pH 6.0 was used for antigen retrieval.



Immunocytochemistry analysis of Prostaglandin D Synthase (green) in K562 using Prostaglandin D Synthase antibody, and DAPI (blue).



Western blot analysis of Prostaglandin D Synthase in K562, C6, 3T3, HeLa lysates using Prostaglandin D Synthase antibody.