

PROM1 RABBIT PAB

Cat.#: S220352

Product Name: Anti-PROM1 Rabbit Polyclonal Antibody

Synonyms: RP41; AC133; CD133; MCDR2; STGD4; CORD12; PROM1; MSTP061

UNIPROT ID: O43490 (Gene Accession - NP_001139319)

Background: This gene encodes a pentaspan transmembrane glycoprotein. The protein localizes to membrane protrusions and is often expressed on adult stem cells, where it is thought to function in maintaining stem cell properties by suppressing differentiation. Mutations in this gene have been shown to result in retinitis pigmentosa and Stargardt disease. Expression of this gene is also associated with several types of cancer. This gene is expressed from at least five alternative promoters that are expressed in a tissue-dependent manner. Multiple transcript variants encoding different isoforms have been found for this gene.

Immunogen: Synthetic peptide of human PROM1

Applications: ELISA, IHC

Recommended Dilutions: IHC: 50-200; ELISA: 1000-5000

Host Species: Rabbit

Clonality: Rabbit Polyclonal

Isotype: Immunogen-specific rabbit IgG

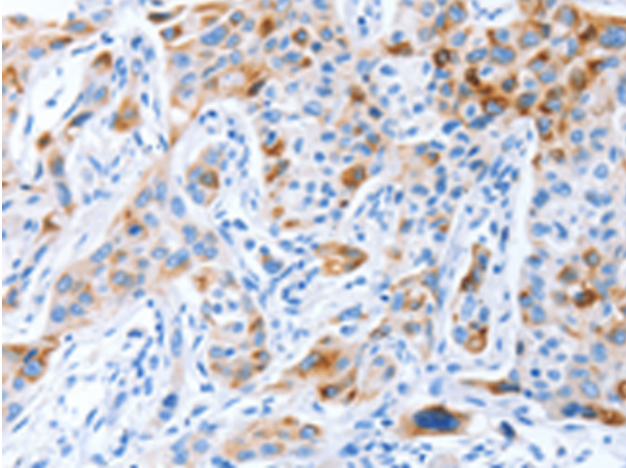
Purification: Antigen affinity purification

Species Reactivity: Human, Mouse

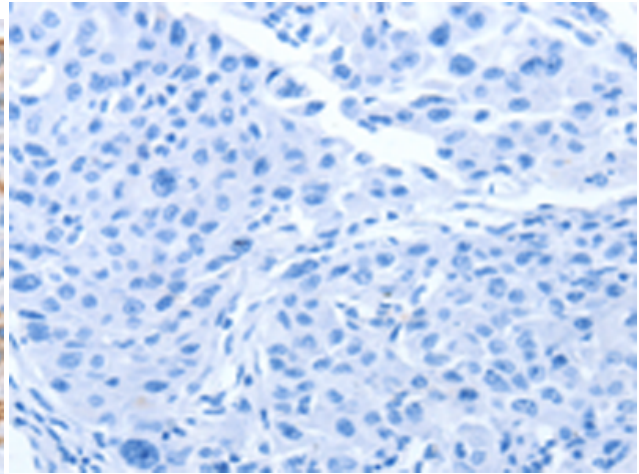
Constituents: PBS (without Mg²⁺ and Ca²⁺), pH 7.4, 150 mM NaCl, 0.05% Sodium Azide and 40% glycerol

Research Areas: Neuroscience, Stem Cells

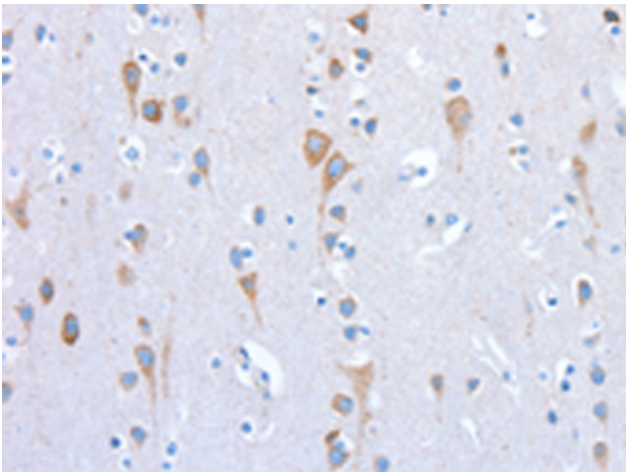
Storage & Shipping: Store at -20°C. Avoid repeated freezing and thawing



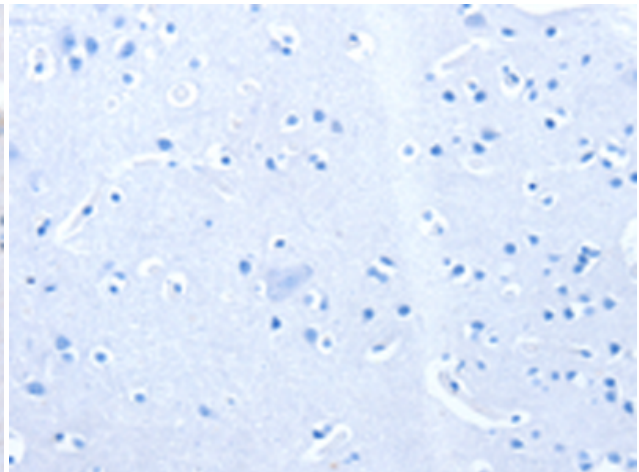
Immunohistochemistry analysis of paraffin embedded Human lung cancer tissue using 220352 (PROM1 Antibody) at a dilution of 1/70 (Cytoplasm).



In comparison with the IHC on the left, the same paraffin-embedded Human lung cancer tissue is first treated with the synthetic peptide and then with 220352 (Anti-PROM1 Antibody) at dilution 1/70.



The image on the left is immunohistochemistry of paraffin-embedded Human brain tissue using 220352 (Anti-PROM1 Antibody) at a dilution of 1/70.



In comparison with the IHC on the left, the same paraffin-embedded Human brain tissue is first treated with synthetic peptide and then with D261406 (Anti-PROM1 Antibody) at dilution 1/70.