

PROKR2 RABBIT PAB

Cat.#: S219831

Product Name: Anti-PROKR2 Rabbit Polyclonal Antibody

Synonyms: HH3; KAL3; PKR2; GPRg2; GPR73b; GPR73L1; dJ680N4.3

UNIPROT ID: Q8NFJ6 (Gene Accession - NP_658986)

Background: Prokineticins are secreted proteins that can promote angiogenesis and induce strong gastrointestinal smooth muscle contraction. The protein encoded by this gene is an integral membrane protein and G protein-coupled receptor for prokineticins. The encoded protein is similar in sequence to GPR73, another G protein-coupled receptor for prokineticins.

Immunogen: Synthetic peptide of human PROKR2

Applications: ELISA, WB, IHC

Recommended Dilutions: IHC: 50-100;WB: 500-2000;ELISA: 5000-10000

Host Species: Rabbit

Clonality: Rabbit Polyclonal

Isotype: Immunogen-specific rabbit IgG

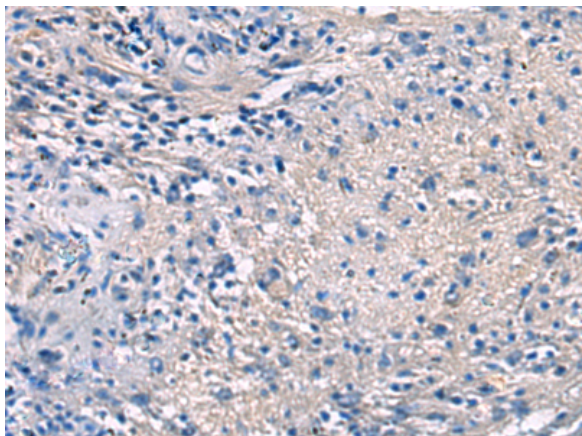
Purification: Antigen affinity purification

Species Reactivity: Human, Mouse

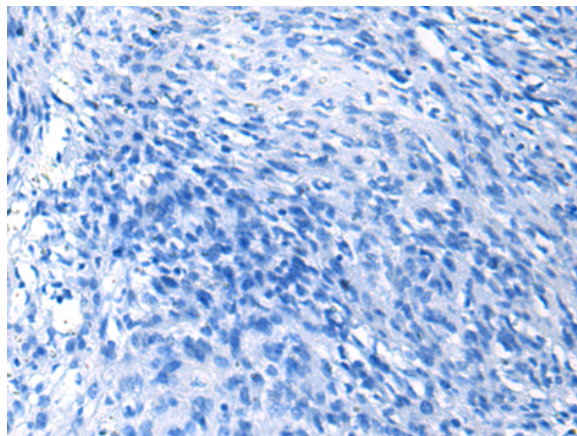
Constituents: PBS (without Mg²⁺ and Ca²⁺), pH 7.4, 150 mM NaCl, 0.05% Sodium Azide and 40% glycerol

Research Areas: Signal Transduction, Neuroscience

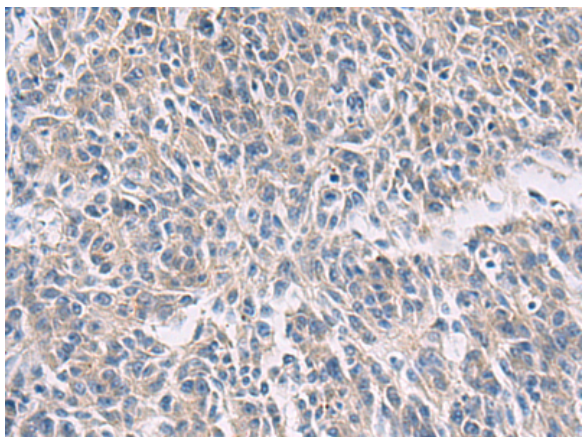
Storage & Shipping: Store at -20°C. Avoid repeated freezing and thawing



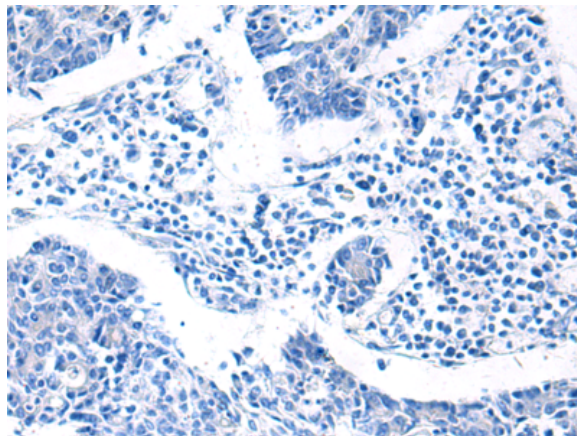
Immunohistochemistry analysis of paraffin embedded Human brain tissue using 219831(PROKR2 Antibody) at a dilution of 1/40(Cytoplasm).



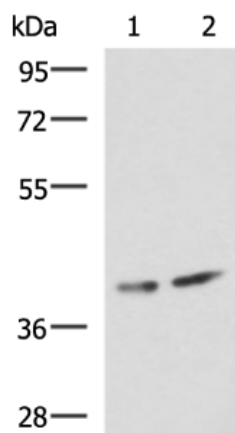
In comparison with the IHC on the left, the same paraffin-embedded Human brain tissue is first treated with the synthetic peptide and then with 219831(Anti-PROKR2 Antibody) at dilution 1/40.



The image on the left is immunohistochemistry of paraffin-embedded Human colorectal cancer tissue using 219831(Anti-PROKR2 Antibody) at a dilution of 1/40.



In comparison with the IHC on the left, the same paraffin-embedded Human colorectal cancer tissue is first treated with synthetic peptide and then with D260451(Anti-PROKR2 Antibody) at dilution 1/40.



Gel: 8%SDS-PAGE, Lysate: 40 µg;
 Lane 1-2: Human cerebrum tissue and Mouse brain tissue lysates;
 Primary antibody: 219831(PROKR2 Antibody) at dilution 1/800;
 Secondary antibody: HRP-conjugated Goat anti rabbit IgG at 1/5000 dilution;
 Exposure time: 1 minute



Product Description

Pioneering GTPase and Oncogene Product Development since 2010
