

PROFILIN 1 RABBIT MAB

Cat.#: N261664

Product Name: Anti-Profilin 1 Rabbit Monoclonal Antibody

Synonyms: Epididymis tissue protein Li 184a; Profilin I

UNIPROT ID: P07737

Background: Binds to actin and affects the structure of the cytoskeleton. At high concentrations, profilin prevents the polymerization of actin, whereas it enhances it at low concentrations. By binding to PIP₂, it inhibits the formation of IP₃ and DG.

Immunogen: A synthetic peptide of human Profilin 1

Applications: WB,IHC-F,IHC-P,ICC/IF,IP

Recommended Dilutions: WB: 1/500-1/1000 IHC: 1/50-1/100 IF: 1/50-1/200 IP: 1/20

Host Species: Rabbit

Clonality: Rabbit Monoclonal

Clone ID: R06-6H7

MW: Calculated MW: 15 kDa; Observed MW: 15 kDa

Isotype: IgG

Purification: Affinity Purified

Species Reactivity: Human,Mouse,Rat

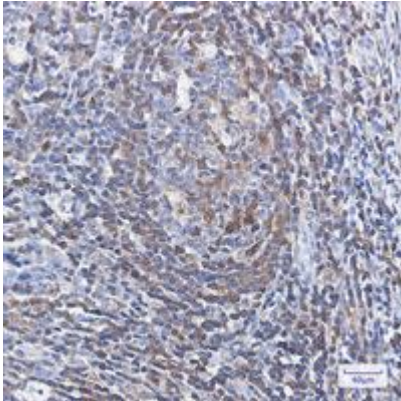
Conjugation: Unconjugated

Modification: Unmodified

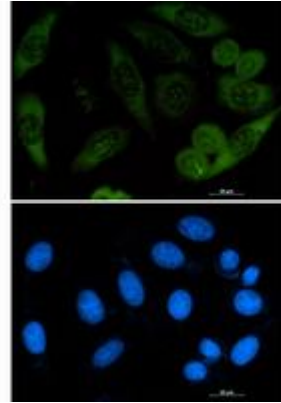
Constituents: PBS (without Mg²⁺ and Ca²⁺), pH 7.3 containing 50% glycerol, 0.5% BSA and 0.02% sodium azide

Research Areas: Tags & Cell Markers

Storage & Shipping: Store at -20°C. Avoid repeated freezing and thawing



Immunohistochemistry analysis of paraffin-embedded Human tonsil using Profilin 1 antibody. High-pressure and temperature Sodium Citrate pH 6.0 was used for antigen retrieval.



Immunocytochemistry analysis of Profilin 1 (green) in A549 using Profilin 1 antibody, and DAPI (blue).



Western blot analysis of Profilin 1 in C6, 3T3, HeLa lysates using Profilin 1 antibody.