

## PRMT5 RABBIT PAB

**Cat.#:** S213719

**Product Name:** Anti-PRMT5 Rabbit Polyclonal Antibody

**Synonyms:** JBPI, SKBI, IBP72, SKBIHs, HRMT1L5

**UNIPROT ID:** O14744 (Gene Accession - NP\_001034708 )

**Background:** Protein arginine methyltransferase 5 has been shown to interact with WD repeat-containing protein 77, CLNS1A, Janus kinase 2, SNRPD3 and SUPT5H. Arginine methyltransferase that can both catalyze the formation of omega-N monomethylarginine (MMA) and symmetrical dimethylarginine (sDMA), with a preference for the formation of MMA. Specifically mediates the symmetrical dimethylation of arginine residues in the small nuclear ribonucleoproteins Sm D1 (SNRPD1) and Sm D3 (SNRPD3); such methylation being required for the assembly and biogenesis of snRNP core particles. Methylates SUPT5H. Mono- and dimethylates arginine residues of myelin basic protein (MBP) in vitro. Plays a role in the assembly of snRNP core particles. May play a role in cytokine-activated transduction pathways. Negatively regulates cyclin E1 promoter activity and cellular proliferation.

**Immunogen:** Synthetic peptide of human PRMT5

**Applications:** ELISA, WB, IHC

**Recommended Dilutions:** IHC: 15-50;WB: 200-1000;ELISA: 1000-2000

**Host Species:** Rabbit

**Clonality:** Rabbit Polyclonal

**Isotype:** Immunogen-specific rabbit IgG

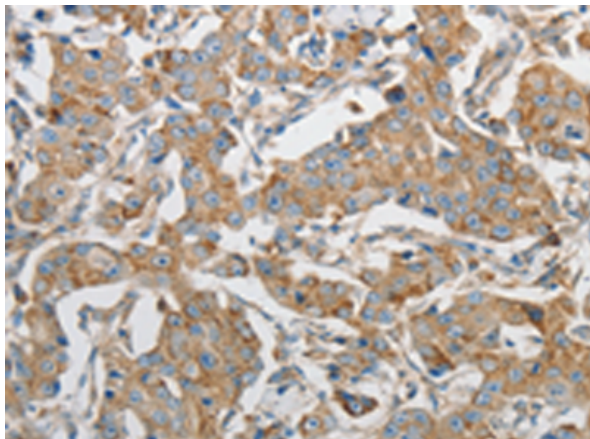
**Purification:** Antigen affinity purification

**Species Reactivity:** Human, Mouse, Rat

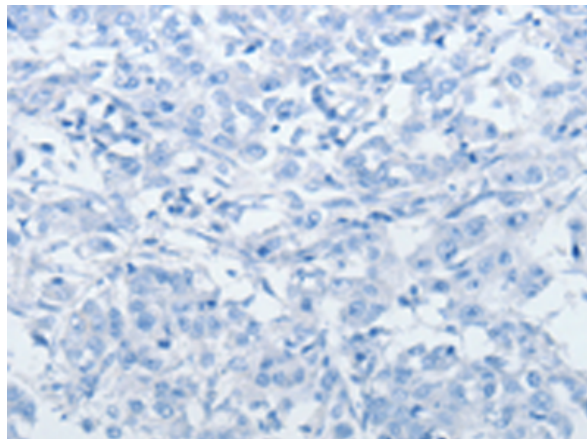
**Constituents:** PBS (without Mg<sup>2+</sup> and Ca<sup>2+</sup>), pH 7.4, 150 mM NaCl, 0.05% Sodium Azide and 40% glycerol

**Research Areas:** Epigenetics and Nuclear Signaling

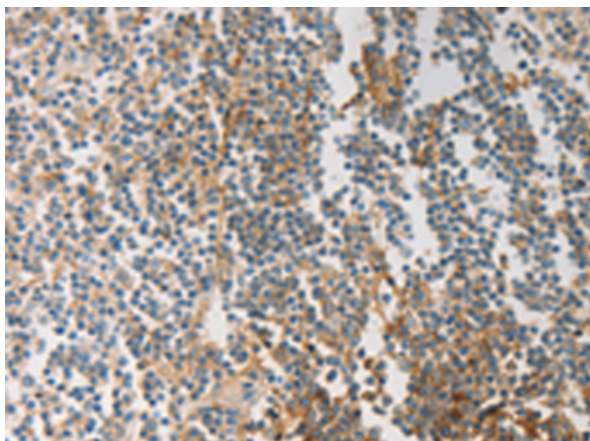
**Storage & Shipping:** Store at -20°C. Avoid repeated freezing and thawing



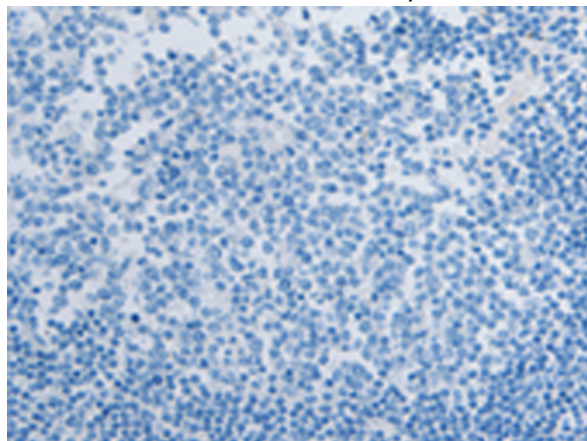
Immunohistochemistry analysis of paraffin embedded Human breast cancer tissue using 213719 (PRMT5 Antibody) at a dilution of 1/20 (Cytoplasm).



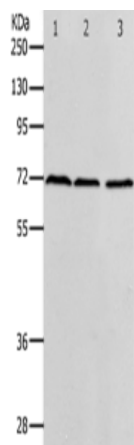
In comparison with the IHC on the left, the same paraffin-embedded Human breast cancer tissue is first treated with the synthetic peptide and then with 213719 (Anti-PRMT5 Antibody) at dilution 1/20.



The image on the left is immunohistochemistry of paraffin-embedded Human tonsil tissue using 213719 (Anti-PRMT5 Antibody) at a dilution of 1/20.



In comparison with the IHC on the left, the same paraffin-embedded Human tonsil tissue is first treated with synthetic peptide and then with D160716 (Anti-PRMT5 Antibody) at dilution 1/20.



Gel: 10% SDS-PAGE, Lysate: 40 µg;  
 Lane 1-3: K562 cells, HeLa cells, 293T cells;  
 Primary antibody: 213719 (PRMT5 Antibody) at dilution 1/400;  
 Secondary antibody: Goat anti rabbit IgG at 1/8000 dilution;  
 Exposure time: 2 minutes



# Product Description

Pioneering GTPase and Oncogene Product Development since 2010

---