

PRKD3 RABBIT PAB

Cat.#: S220075

Product Name: Anti-PRKD3 Rabbit Polyclonal Antibody

Synonyms: EPK2; PKD3; PRKCN; PKC-NU; nPKC-NU

UNIPROT ID: O94806 (Gene Accession - NP_005804)

Background: Protein kinase C (PKC) is a family of serine- and threonine-specific protein kinases that can be activated by calcium and the second messenger diacylglycerol. PKC family members phosphorylate a wide variety of protein targets and are known to be involved in diverse cellular signaling pathways. PKC family members also serve as major receptors for phorbol esters, a class of tumor promoters. Each member of the PKC family has a specific expression profile and is believed to play a distinct role. The protein encoded by this gene is one of the PKC family members.

Immunogen: Synthetic peptide of human PRKD3

Applications: ELISA, WB, IHC

Recommended Dilutions: IHC: 50-200;WB: 200-1000;ELISA: 1000-2000

Host Species: Rabbit

Clonality: Rabbit Polyclonal

Isotype: Immunogen-specific rabbit IgG

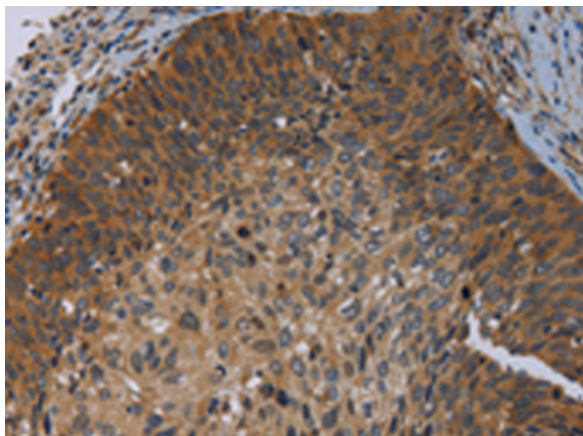
Purification: Antigen affinity purification

Species Reactivity: Human, Mouse

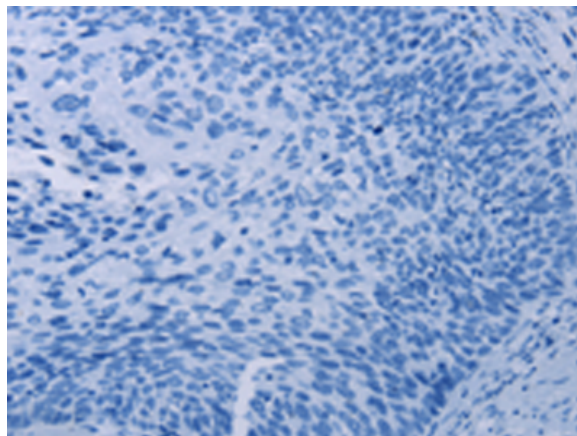
Constituents: PBS (without Mg²⁺ and Ca²⁺), pH 7.4, 150 mM NaCl, 0.05% Sodium Azide and 40% glycerol

Research Areas: Signal Transduction

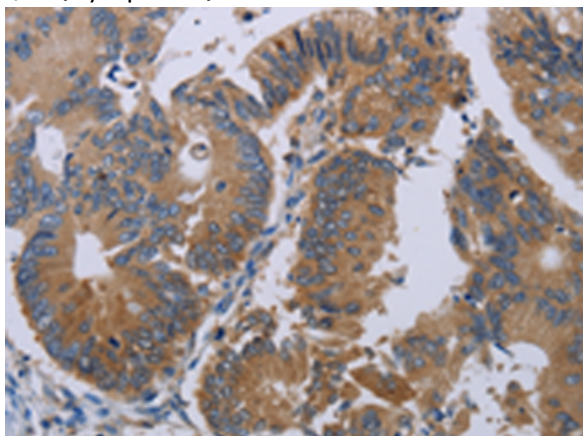
Storage & Shipping: Store at -20°C. Avoid repeated freezing and thawing



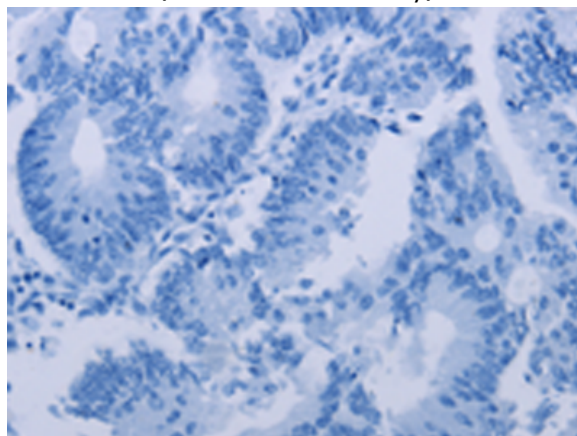
Immunohistochemistry analysis of paraffin embedded Human cervical cancer tissue using 220075(PRKD3 Antibody) at a dilution of 1/50(Cytoplasm).



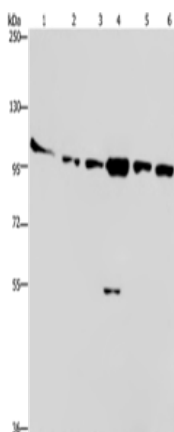
In comparison with the IHC on the left, the same paraffin-embedded Human cervical cancer tissue is first treated with the synthetic peptide and then with 220075(Anti-PRKD3 Antibody) at dilution 1/50.



The image on the left is immunohistochemistry of paraffin-embedded Human colon cancer tissue using 220075(Anti-PRKD3 Antibody) at a dilution of 1/50.



In comparison with the IHC on the left, the same paraffin-embedded Human colon cancer tissue is first treated with synthetic peptide and then with D260912(Anti-PRKD3 Antibody) at dilution 1/50.



Gel: 6%SDS-PAGE, Lysate: 40 µg;
 Lane 1-6: Human testis tissue, K562 cells, A549 cells, Raji cells, NIH/3T3 cells, Hela cells;
 Primary antibody: 220075(PRKD3 Antibody) at dilution 1/200;
 Secondary antibody: Goat anti rabbit IgG at 1/8000 dilution;
 Exposure time: 10 minutes



Product Description

Pioneering GTPase and Oncogene Product Development since 2010
