

## PRKD1 RABBIT PAB

**Cat.#:** S220174

**Product Name:** Anti-PRKD1 Rabbit Polyclonal Antibody

**Synonyms:** PKD, PKCM, PRKCM, PKC-MU

**UNIPROT ID:** Q15139 (Gene Accession - NP\_002733 )

**Background:** PRKD1 is a serine/threonine kinase that regulates a variety of cellular functions, including membrane receptor signaling, transport at the Golgi, protection from oxidative stress at the mitochondria, gene transcription, and regulation of cell shape, motility, and adhesion

**Immunogen:** Synthetic peptide of human PRKD1

**Applications:** ELISA, IHC

**Recommended Dilutions:** IHC: 50-200; ELISA: 2000-10000

**Host Species:** Rabbit

**Clonality:** Rabbit Polyclonal

**Isotype:** Immunogen-specific rabbit IgG

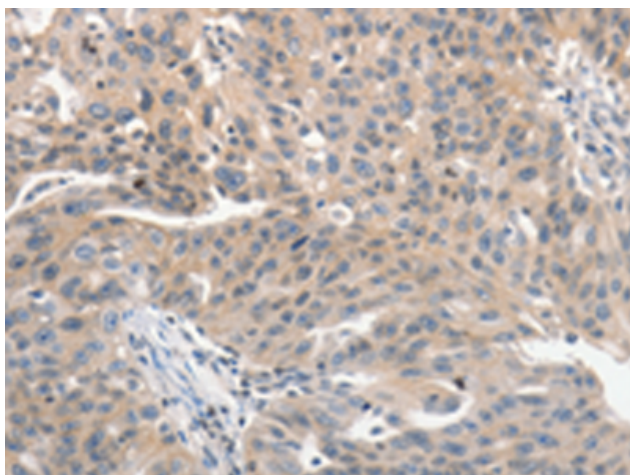
**Purification:** Antigen affinity purification

**Species Reactivity:** Human, Mouse, Rat

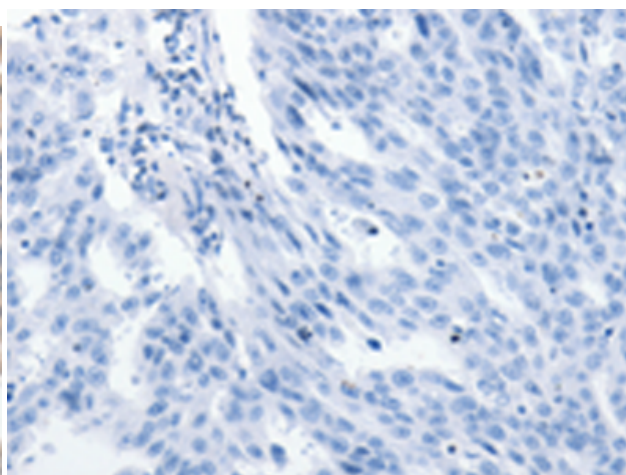
**Constituents:** PBS (without Mg<sup>2+</sup> and Ca<sup>2+</sup>), pH 7.4, 150 mM NaCl, 0.05% Sodium Azide and 40% glycerol

**Research Areas:** Signal Transduction, Cancer, Metabolism

**Storage & Shipping:** Store at -20°C. Avoid repeated freezing and thawing



Immunohistochemistry analysis of paraffin embedded Human ovarian cancer tissue using 220174 (PRKD1 Antibody) at a dilution of 1/70 (Cytoplasm).



In comparison with the IHC on the left, the same paraffin-embedded Human ovarian cancer tissue is first treated with the synthetic peptide and then with 220174 (Anti-PRKD1 Antibody) at dilution 1/70.