

PRKCSH RABBIT PAB

Cat.#: S219381

Product Name: Anti-PRKCSH Rabbit Polyclonal Antibody

Synonyms: G11B; PCLD; PLD1; G19P1; PCLD1; PKCSH; AGE-R2; VASAP-60

UNIPROT ID: P14314 (Gene Accession - BC013586)

Background: This gene encodes the beta-subunit of glucosidase II, an N-linked glycan-processing enzyme in the endoplasmic reticulum. The encoded protein is an acidic phosphoprotein known to be a substrate for protein kinase C. Mutations in this gene have been associated with the autosomal dominant polycystic liver disease. Alternative splicing results in multiple transcript variants.

Immunogen: Fusion protein of human PRKCSH

Applications: ELISA, WB, IHC

Recommended Dilutions: IHC: 50-200;WB: 500-2000;ELISA: 5000-10000

Host Species: Rabbit

Clonality: Rabbit Polyclonal

Isotype: Immunogen-specific rabbit IgG

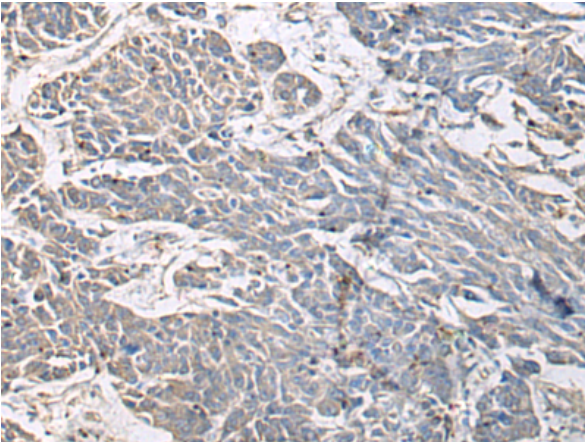
Purification: Antigen affinity purification

Species Reactivity: Human, Mouse

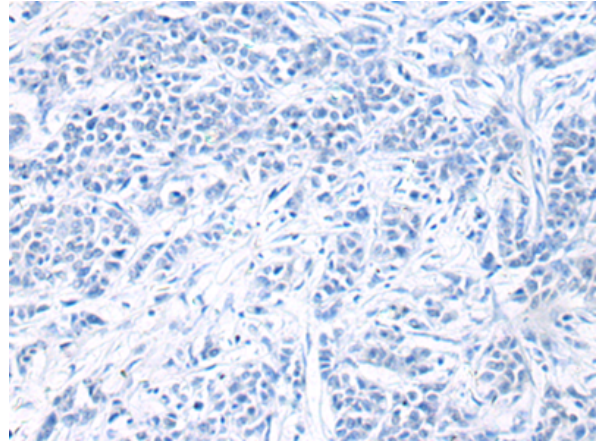
Constituents: PBS (without Mg²⁺ and Ca²⁺), pH 7.4, 150 mM NaCl, 0.05% Sodium Azide and 40% glycerol

Research Areas: Signal Transduction

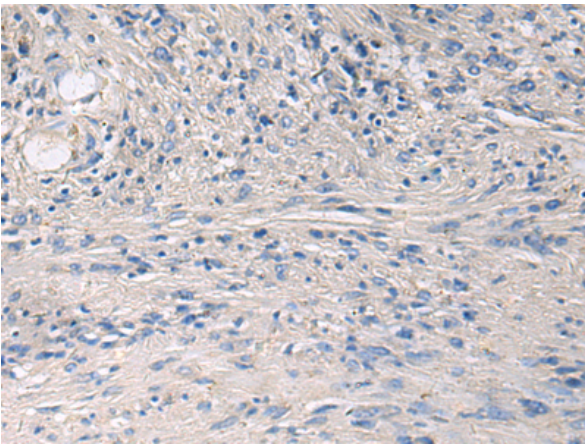
Storage & Shipping: Store at -20°C. Avoid repeated freezing and thawing



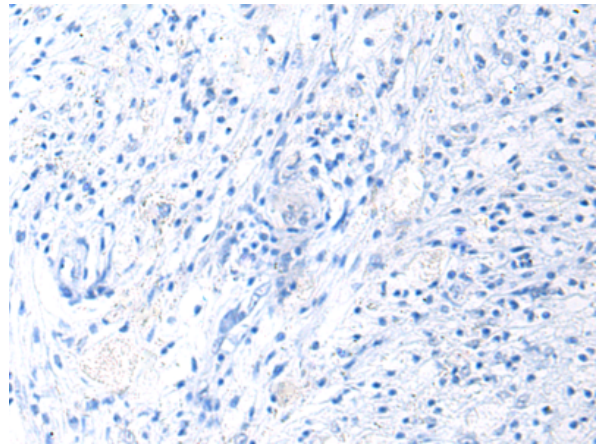
Immunohistochemistry analysis of paraffin embedded Human colorectal cancer tissue using 219381 (PRKCSH Antibody) at a dilution of 1/65 (Cytoplasm).



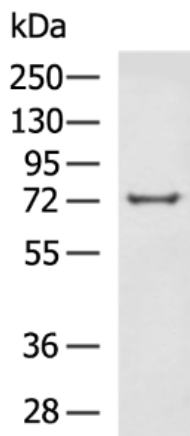
In comparison with the IHC on the left, the same paraffin-embedded Human colorectal cancer tissue is first treated with the fusion protein and then with 219381 (Anti-PRKCSH Antibody) at dilution 1/65.



The image on the left is immunohistochemistry of paraffin-embedded Human brain tissue using 219381 (Anti-PRKCSH Antibody) at a dilution of 1/65.



In comparison with the IHC on the left, the same paraffin-embedded Human brain tissue is first treated with fusion protein and then with D226579 (Anti-PRKCSH Antibody) at dilution 1/65.



Gel: 8% SDS-PAGE, Lysate: 40 µg;
Lane: Mouse brain tissue lysate;
Primary antibody: 219381 (PRKCSH Antibody) at dilution 1/600;
Secondary antibody: HRP-conjugated Goat anti rabbit IgG at 1/5000 dilution;
Exposure time: 1 minute



Product Description

Pioneering GTPase and Oncogene Product Development since 2010
