

## PRKCA RABBIT PAB

**Cat.#:** S216733

**Product Name:** Anti-PRKCA Rabbit Polyclonal Antibody

**Synonyms:** AAG6; PKCA; PRKACA; PKC- $\alpha$

**UNIPROT ID:** P17252 (Gene Accession - BC109273 )

**Background:** Protein kinase C (PKC) is a family of serine- and threonine-specific protein kinases that can be activated by calcium and the second messenger diacylglycerol. PKC family members phosphorylate a wide variety of protein targets and are known to be involved in diverse cellular signaling pathways. PKC family members also serve as major receptors for phorbol esters, a class of tumor promoters. Each member of the PKC family has a specific expression profile and is believed to play a distinct role in cells. The protein encoded by this gene is one of the PKC family members. This kinase has been reported to play roles in many different cellular processes, such as cell adhesion, cell transformation, cell cycle checkpoint, and cell volume control. Knockout studies in mice suggest that this kinase may be a fundamental regulator of cardiac contractility and Ca(2+) handling in myocytes.

**Immunogen:** Fusion protein of human PRKCA

**Applications:** ELISA, WB, IHC

**Recommended Dilutions:** IHC: 25-100;WB: 200-1000;ELISA: 2000-5000

**Host Species:** Rabbit

**Clonality:** Rabbit Polyclonal

**Isotype:** Immunogen-specific rabbit IgG

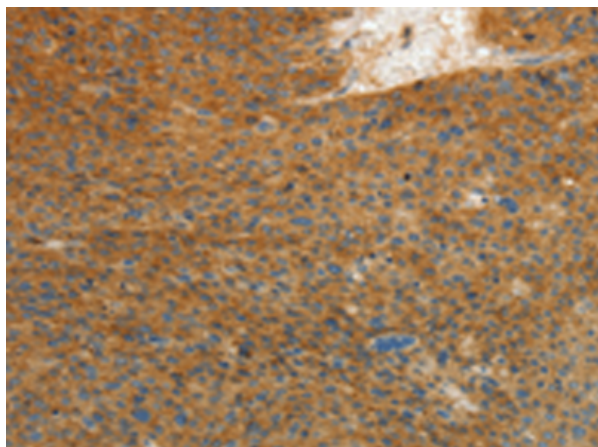
**Purification:** Antigen affinity purification

**Species Reactivity:** Human, Mouse, Rat

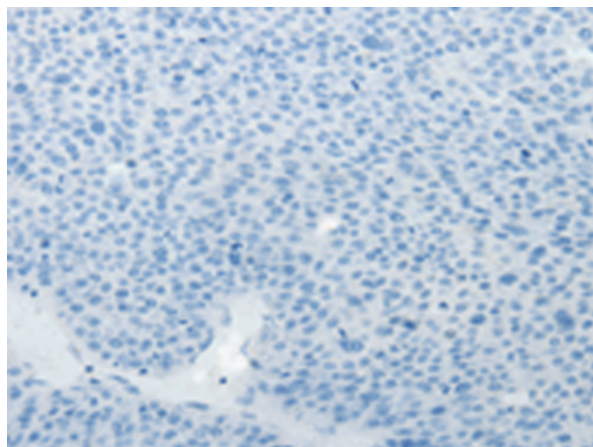
**Constituents:** PBS (without Mg<sup>2+</sup> and Ca<sup>2+</sup>), pH 7.4, 150 mM NaCl, 0.05% Sodium Azide and 40% glycerol

**Research Areas:** Signal Transduction, Cardiovascular

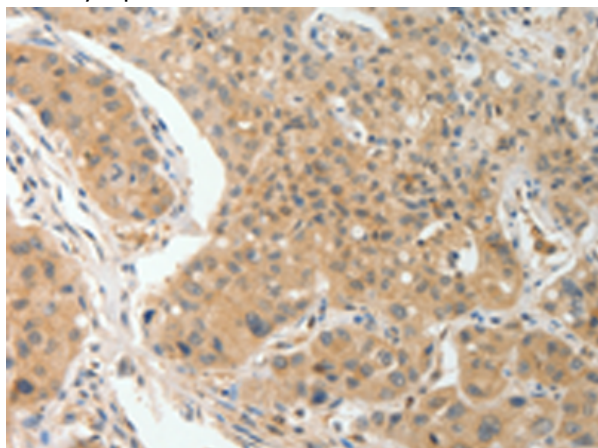
**Storage & Shipping:** Store at -20°C. Avoid repeated freezing and thawing



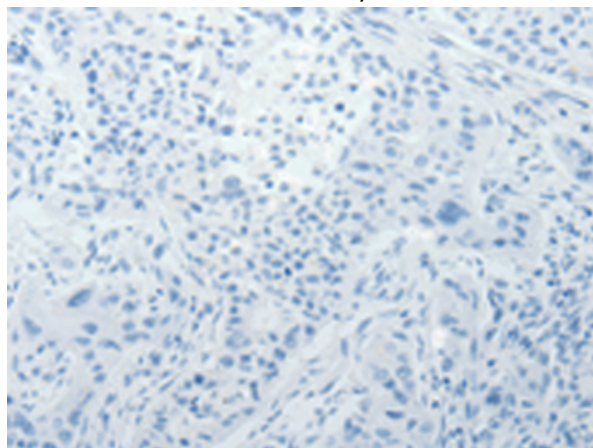
Immunohistochemistry analysis of paraffin embedded Human liver cancer tissue using 216733(PRKCA Antibody) at a dilution of 1/10(Cytoplasm).



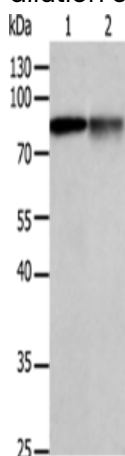
In comparison with the IHC on the left, the same paraffin-embedded Human liver cancer tissue is first treated with the fusion protein and then with 216733(Anti-PRKCA Antibody) at dilution 1/10.



The image on the left is immunohistochemistry of paraffin-embedded Human lung cancer tissue using 216733(Anti-PRKCA Antibody) at a dilution of 1/10.



In comparison with the IHC on the left, the same paraffin-embedded Human lung cancer tissue is first treated with fusion protein and then with D221138(Anti-PRKCA Antibody) at dilution 1/10.



Gel: 10%SDS-PAGE, Lysate: 50 µg;  
 Lane 1-2: Jurkat cells, HT29 cells;  
 Primary antibody: 216733(PRKCA Antibody) at dilution 1/150;  
 Secondary antibody: Goat anti rabbit IgG at 1/8000 dilution;  
 Exposure time: 20 seconds



# Product Description

Pioneering GTPase and Oncogene Product Development since 2010

---