

PRESENILIN 1 RABBIT MAB

Cat.#: N262756

Product Name: Anti-Presenilin 1 Rabbit Monoclonal Antibody

Synonyms: PSEN1; AD3; PS1; PSNL1; Presenilin-1; PS-1; Protein S182

UNIPROT ID: P49768

Background: Probable catalytic subunit of the gamma-secretase complex, an endoprotease complex that catalyzes the intramembrane cleavage of integral membrane proteins such as Notch receptors and APP (beta-amyloid precursor protein). Requires the other members of the gamma-secretase complex to have a protease activity.

Immunogen: A synthetic peptide of human Presenilin 1

Applications: WB, ICC/IF, IP

Recommended Dilutions: WB: 1/500-1/1000 IF: 1/50-1/200 IP: 1/20

Host Species: Rabbit

Clonality: Rabbit Monoclonal

Clone ID: R05-4D4

MW: Calculated MW: 53 kDa; Observed MW: 20 kDa

Isotype: IgG

Purification: Affinity Purified

Species Reactivity: Human, Mouse, Rat

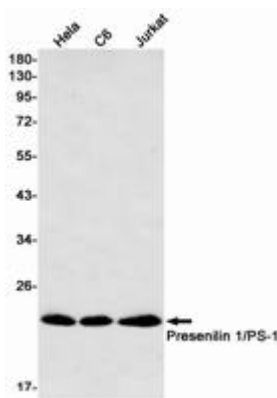
Conjugation: Unconjugated

Modification: Unmodified

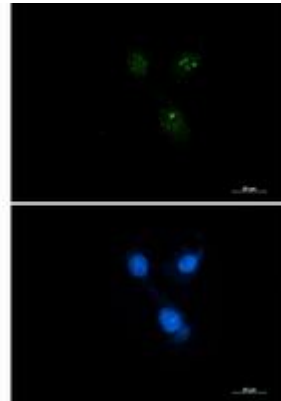
Constituents: PBS (without Mg²⁺ and Ca²⁺), pH 7.3 containing 50% glycerol, 0.5% BSA and 0.02% sodium azide

Research Areas: Neuroscience, Alzheimer's disease

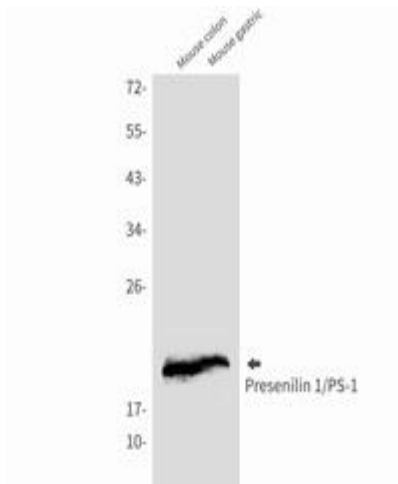
Storage & Shipping: Store at -20°C. Avoid repeated freezing and thawing



Western blot analysis of Presenilin 1/PS1 in HeLa, C6, Jurkat lysates using Presenilin 1/PS1 antibody



Immunocytochemistry analysis of Presenilin 1 (green) in SKOV-3 using Presenilin 1 antibody, and DAPI (blue).



Western blot analysis of Presenilin 1/PS1 in mouse colon, mouse gastric lysates using Presenilin 1/PS1 antibody.