

PREP RABBIT PAB

Cat.#: N225057

Product Name: Anti-PREP Rabbit pAb

Synonyms: PREP; PEP; Prolyl endopeptidase; PE; Post-proline cleaving enzyme

UNIPROT ID: P48147

Background: The protein encoded by this gene is a cytosolic prolyl endopeptidase that cleaves peptide bonds on the C-terminal side of prolyl residues within peptides that are up to approximately 30 amino acids long. Prolyl endopeptidases have been reported to be involved in the maturation and degradation of peptide hormones and neuropeptides.

Immunogen: Synthesized peptide derived from PREP . at AA range: 10-90

Applications: WB,IHC-P,ELISA

Recommended Dilutions: WB: 1/500-1/1000 IHC: 1/50-1/100 ELISA: 1/10000

Host Species: Rabbit

Clonality: Rabbit Polyclonal

Clone ID: -

MW: Calculated MW: 81 kDa; Observed MW: 81 kDa

Isotype: IgG

Purification: Affinity Purified

Species Reactivity: Human,Mouse,Rat

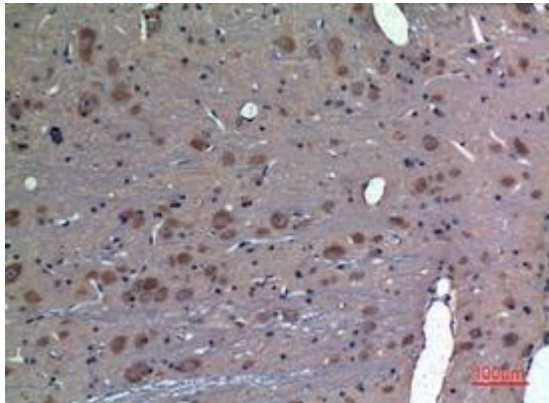
Conjugation: Unconjugated

Modification: Unmodified

Constituents: PBS (without Mg²⁺ and Ca²⁺), pH 7.3 containing 50% glycerol, 0.5% BSA and 0.02% sodium azide

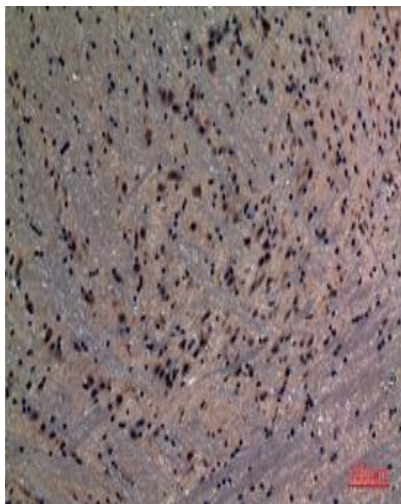
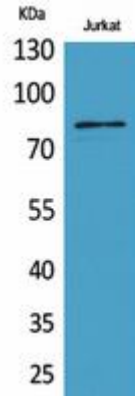
Research Areas: -

Storage & Shipping: Store at -20°C. Avoid repeated freezing and thawing



Immunohistochemistry analysis of paraffin-embedded rat brain

using PREP antibody. High-pressure and temperature Sodium Citrate pH 6.0 was used for antigen retrieval.



Immunohistochemistry analysis of paraffin-embedded mouse brain using PREP antibody. High-pressure and temperature Sodium Citrate pH 6.0 was used for antigen retrieval.