

PRELID3B RABBIT PAB

Cat.#: S219244

Product Name: Anti-PRELID3B Rabbit Polyclonal Antibody

Synonyms: SLMO2; C20orf45; dJ543J19.5

UNIPROT ID: Q9Y3B1 (Gene Accession - BC010649)

Background: The function of this protein remains unknown.

Immunogen: Fusion protein of human PRELID3B

Applications: ELISA, IHC

Recommended Dilutions: IHC: 100-300; ELISA: 5000-10000

Host Species: Rabbit

Clonality: Rabbit Polyclonal

Isotype: Immunogen-specific rabbit IgG

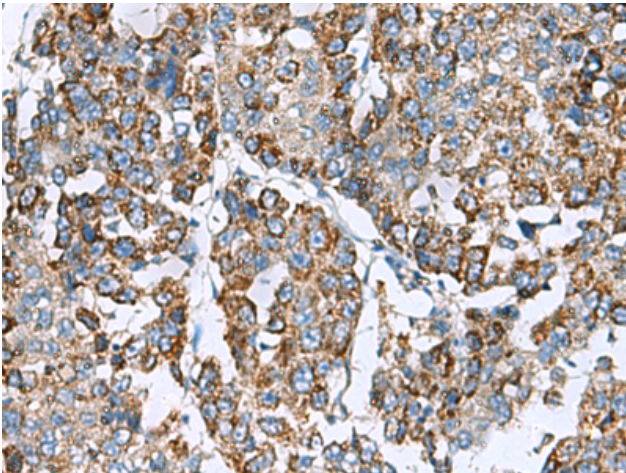
Purification: Antigen affinity purification

Species Reactivity: Human, Mouse, Rat

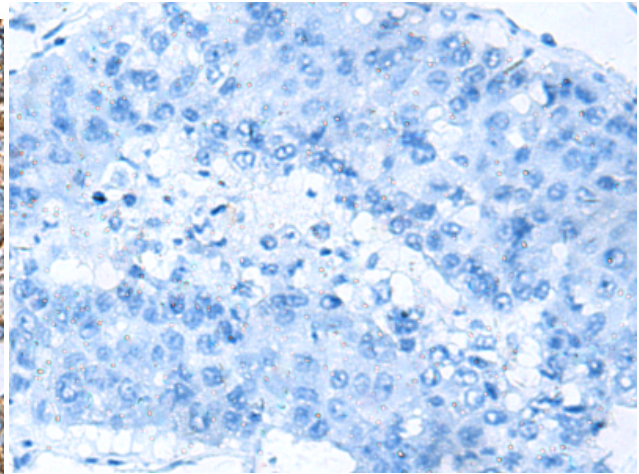
Constituents: PBS (without Mg²⁺ and Ca²⁺), pH 7.4, 150 mM NaCl, 0.05% Sodium Azide and 40% glycerol

Research Areas: Cell Biology

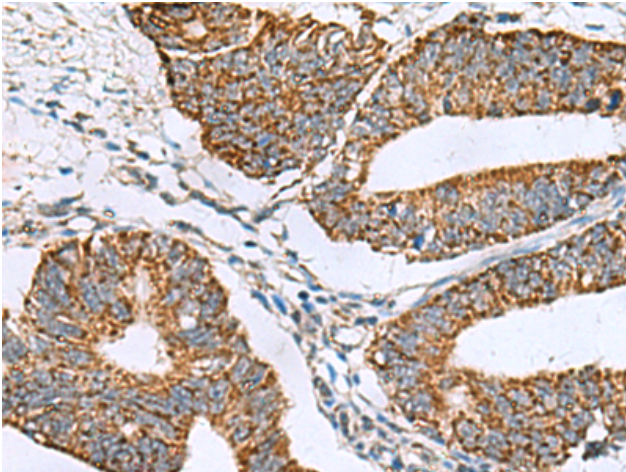
Storage & Shipping: Store at -20°C. Avoid repeated freezing and thawing



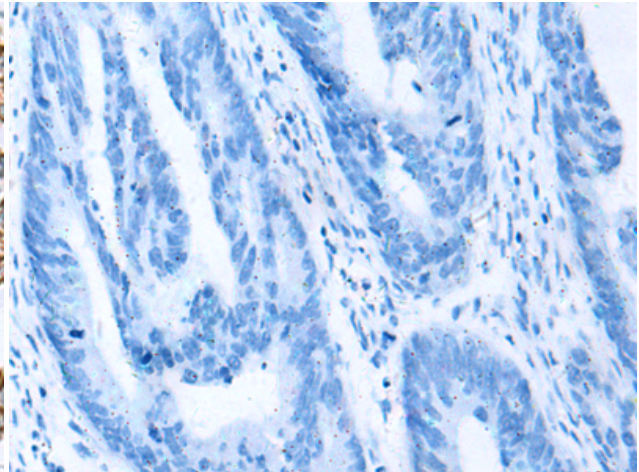
Immunohistochemistry analysis of paraffin embedded Human liver cancer tissue using 219244(PRELID3B Antibody) at a dilution of 1/90(Cytoplasm).



In comparison with the IHC on the left, the same paraffin-embedded Human liver cancer tissue is first treated with the fusion protein and then with 219244(Anti-PRELID3B Antibody) at dilution 1/90.



The image on the left is immunohistochemistry of paraffin-embedded Human colorectal cancer tissue using 219244(Anti-PRELID3B Antibody) at a dilution of 1/90.



In comparison with the IHC on the left, the same paraffin-embedded Human colorectal cancer tissue is first treated with fusion protein and then with D226122(Anti-PRELID3B Antibody) at dilution 1/90.