

PREALBUMIN (1F6) MOUSE MAB

Cat.#: N261345

Product Name: Anti-Prealbumin (1F6) Mouse Monoclonal Antibody

Synonyms: Prealbumin; TBPA; Amyloidosis I; Transthyretin

UNIPROT ID: P02766

Background: Thyroid hormone-binding protein. Probably transports thyroxine from the bloodstream to the brain.

Immunogen: Purified recombinant protein expressed in E.coli.

Applications: WB,IHC-P

Recommended Dilutions: WB: 1/500-1/1000 IHC: 1/50-1/100

Host Species: Mouse

Clonality: Mouse Monoclonal

Clone ID: 1F6-9A9-6A5

MW: Calculated MW: 16 kDa; Observed MW: 16 kDa

Isotype: IgG1

Purification: Affinity Purified

Species Reactivity: Human

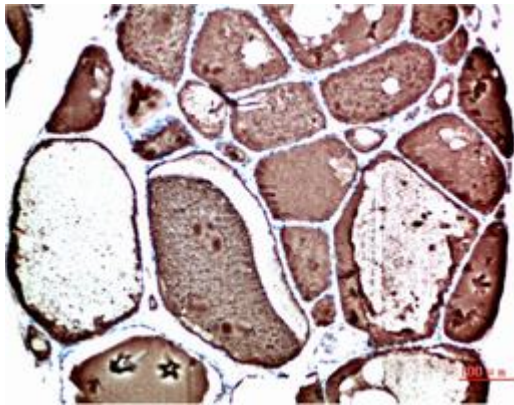
Conjugation: Unconjugated

Modification: Unmodified

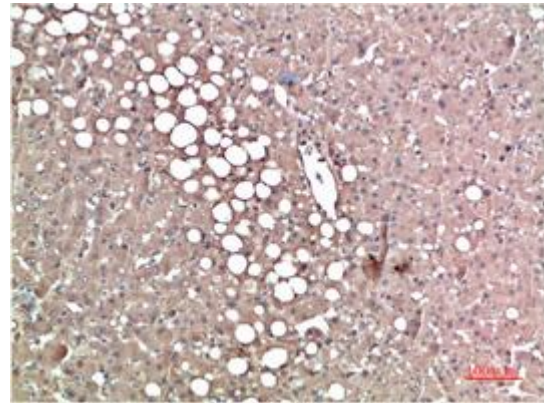
Constituents: PBS (without Mg²⁺ and Ca²⁺), pH 7.3 containing 50% glycerol, 0.5% BSA and 0.02% sodium azide

Research Areas: Neuroscience

Storage & Shipping: Store at -20°C. Avoid repeated freezing and thawing



Immunohistochemical analysis of paraffin-embedded Human tonsils using Prealbumin (1F6) antibody. High-pressure and temperature Sodium Citrate pH 6.0 was used for antigen retrieval.



Immunohistochemistry analysis of paraffin-embedded Human Liver Carcinoma Tissue using Prealbumin (1F6) antibody. High-pressure and temperature Sodium Citrate pH 6.0 was used for antigen retrieval.



Western blot analysis of Prealbumin (1F6) in Hela, Jurkat, mouse brain, MOLT4, Human serum lysates using Prealbumin (1F6) antibody