

## PRDX1 RABBIT PAB

**Cat.#:** S219974

**Product Name:** Anti-PRDX1 Rabbit Polyclonal Antibody

**Synonyms:** PAG, PAGA, PAGB, PRX1, PRXI, MSP23, NKEFA, TDPX2, NKEF-A

**UNIPROT ID:** Q06830 (Gene Accession - NP\_001189360 NP\_002565 )

**Background:** This gene encodes a member of the peroxiredoxin family of antioxidant enzymes, which reduce hydrogen peroxide and alkyl hydroperoxides. The encoded protein may play an antioxidant protective role in cells, and may contribute to the antiviral activity of CD8(+) T-cells. This protein may have a proliferative effect and play a role in cancer development or progression. Four transcript variants encoding the same protein have been identified for this gene.

**Immunogen:** Synthetic peptide of human PRDX1

**Applications:** ELISA, WB, IHC

**Recommended Dilutions:** IHC: 25-100;WB: 200-1000;ELISA: 1000-2000

**Host Species:** Rabbit

**Clonality:** Rabbit Polyclonal

**Isotype:** Immunogen-specific rabbit IgG

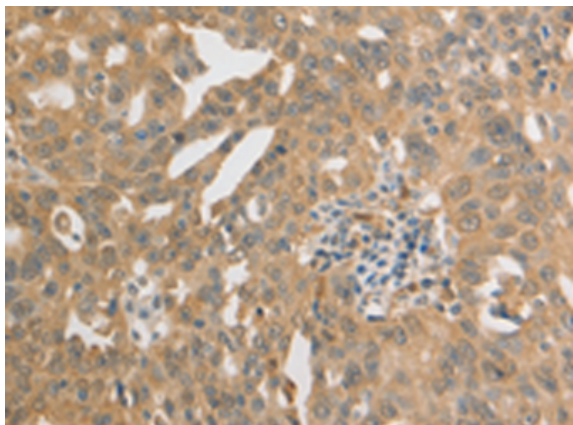
**Purification:** Antigen affinity purification

**Species Reactivity:** Human, Mouse, Rat

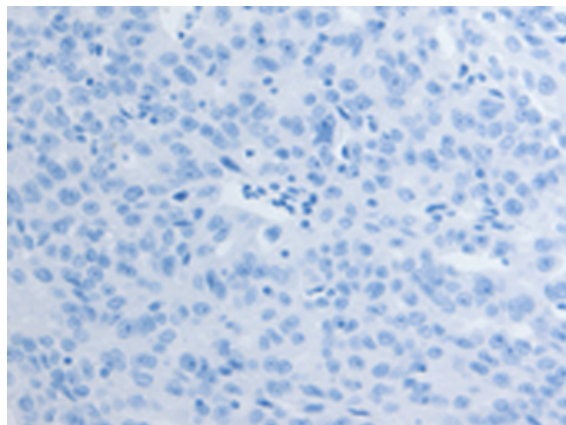
**Constituents:** PBS (without Mg<sup>2+</sup> and Ca<sup>2+</sup>), pH 7.4, 150 mM NaCl, 0.05% Sodium Azide and 40% glycerol

**Research Areas:** Metabolism, Cell Biology, Cardiovascular

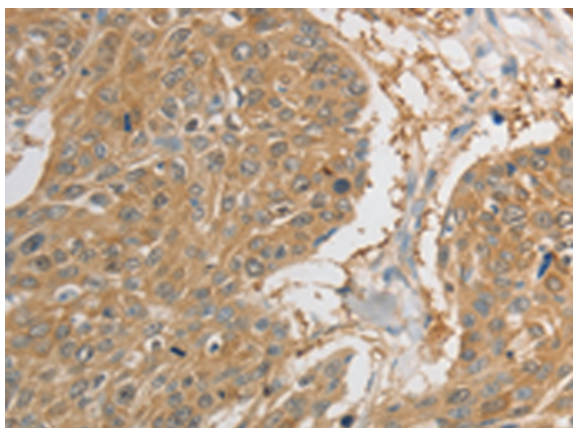
**Storage & Shipping:** Store at -20°C. Avoid repeated freezing and thawing



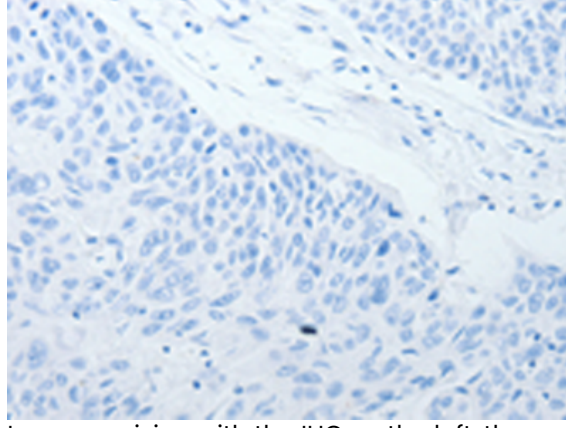
Immunohistochemistry analysis of paraffin embedded Human ovarian cancer tissue using 219974 (PRDX1 Antibody) at a dilution of 1/20 (Cytoplasm).



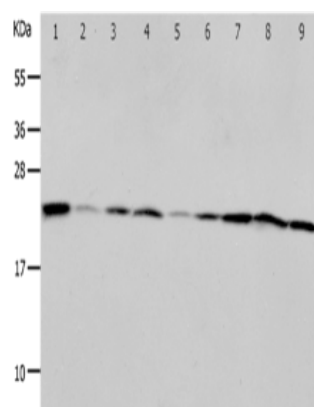
In comparison with the IHC on the left, the same paraffin-embedded Human ovarian cancer tissue is first treated with the synthetic peptide and then with 219974 (Anti-PRDX1 Antibody) at dilution 1/20.



The image on the left is immunohistochemistry of paraffin-embedded Human esophagus cancer tissue using 219974 (Anti-PRDX1 Antibody) at a dilution of 1/20.



In comparison with the IHC on the left, the same paraffin-embedded Human esophagus cancer tissue is first treated with synthetic peptide and then with D260717 (Anti-PRDX1 Antibody) at dilution 1/20.



Gel: 12% SDS-PAGE, Lysate: 40 µg;  
 Lane 1-9: Mouse liver tissue, Mouse kidney tissue, NIH/3T3 cells, RAW264.7 cells, human fetal brain tissue, 293T cells, K562 cells, Jurkat cells, Hela cells;  
 Primary antibody: 219974 (PRDX1 Antibody) at dilution 1/400;  
 Secondary antibody: Goat anti rabbit IgG at 1/8000 dilution;  
 Exposure time: 50 seconds



# Product Description

Pioneering GTPase and Oncogene Product Development since 2010

---