

PRAME RABBIT MAB

Cat.#: N262751

Product Name: Anti-PRAME Rabbit Monoclonal Antibody

Synonyms: MAPE; OIP4; CT130; OIP-4

UNIPROT ID: P78395

Background: Functions as a transcriptional repressor, inhibiting the signaling of retinoic acid through the retinoic acid receptors RARA, RARB and RARG. Prevents retinoic acid-induced cell proliferation arrest, differentiation and apoptosis.

Immunogen: Recombinant protein of human PRAME

Applications: WB,IHC-P,IP

Recommended Dilutions: WB: 1/500-1/1000 IHC: 1/50-1/100 IP: 1/20

Host Species: Rabbit

Clonality: Rabbit Monoclonal

Clone ID: R08-7B6

MW: Calculated MW: 58 kDa; Observed MW: 58 kDa

Isotype: IgG

Purification: Affinity Purified

Species Reactivity: Human,Mouse

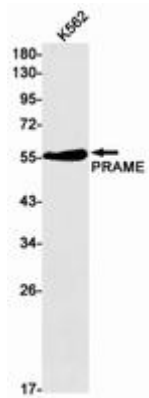
Conjugation: Unconjugated

Modification: Unmodified

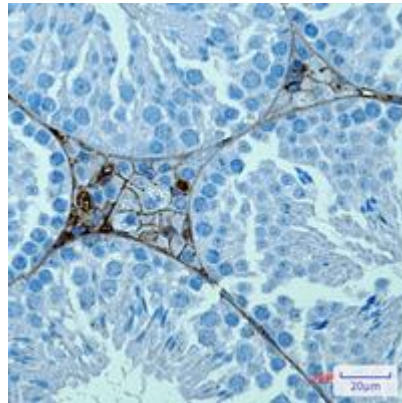
Constituents: PBS (without Mg²⁺ and Ca²⁺), pH 7.3 containing 50% glycerol, 0.5% BSA and 0.02% sodium azide

Research Areas: Tags & Cell Markers

Storage & Shipping: Store at -20°C. Avoid repeated freezing and thawing



Western blot analysis of PRAME in K562 lysates using PRAME antibody.



Immunohistochemistry analysis of paraffin-embedded mouse testis using PRAME antibody. High-pressure and temperature Sodium Citrate pH 6.0 was used for antigen retrieval.