

PPP3R1 RABBIT PAB

Cat.#: S218422

Product Name: Anti-PPP3R1 Rabbit Polyclonal Antibody

Synonyms: CNB; CNBI; CALNBI

UNIPROT ID: P63098 (Gene Accession - BC027913)

Background: Regulatory subunit of calcineurin, a calcium-dependent, calmodulin stimulated protein phosphatase. Confers calcium sensitivity.

Immunogen: Full length fusion protein

Applications: ELISA, IHC

Recommended Dilutions: IHC: 50-300; ELISA: 5000-10000

Host Species: Rabbit

Clonality: Rabbit Polyclonal

Isotype: Immunogen-specific rabbit IgG

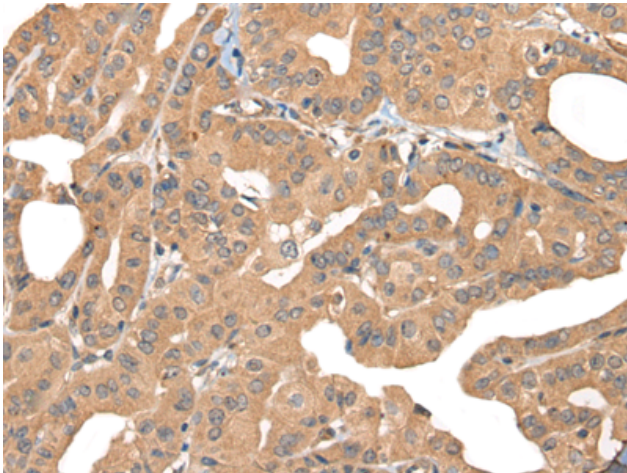
Purification: Antigen affinity purification

Species Reactivity: Human, Mouse, Rat

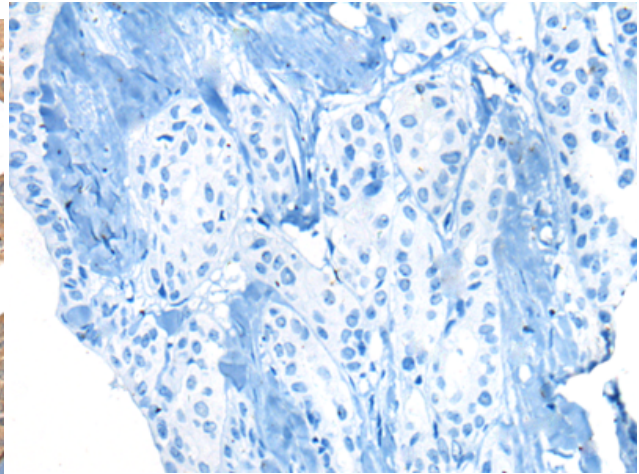
Constituents: PBS (without Mg²⁺ and Ca²⁺), pH 7.4, 150 mM NaCl, 0.05% Sodium Azide and 40% glycerol

Research Areas: Signal Transduction, Immunology

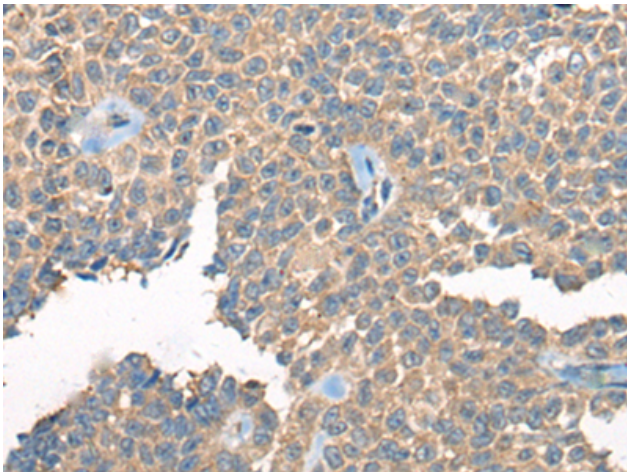
Storage & Shipping: Store at -20°C. Avoid repeated freezing and thawing



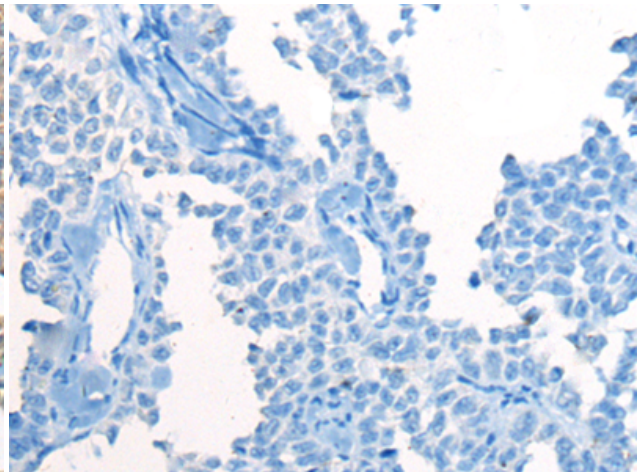
Immunohistochemistry analysis of paraffin embedded Human thyroid cancer tissue using 218422(PPP3R1 Antibody) at a dilution of 1/55(Cytoplasm).



In comparison with the IHC on the left, the same paraffin-embedded Human thyroid cancer tissue is first treated with the fusion protein and then with 218422(Anti-PPP3R1 Antibody) at dilution 1/55.



The image on the left is immunohistochemistry of paraffin-embedded Human ovarian cancer tissue using 218422(Anti-PPP3R1 Antibody) at a dilution of 1/55.



In comparison with the IHC on the left, the same paraffin-embedded Human ovarian cancer tissue is first treated with fusion protein and then with D224382(Anti-PPP3R1 Antibody) at dilution 1/55.