

## PPP2R5E RABBIT MAB

**Cat.#:** N263505

**Product Name:** Anti-PPP2R5E Rabbit Monoclonal Antibody

**Synonyms:** B56E; B56epsilon

**UNIPROT ID:** Q16537

**Background:** The B regulatory subunit might modulate substrate selectivity and catalytic activity, and also might direct the localization of the catalytic enzyme to a particular subcellular compartment.

**Immunogen:** A synthetic peptide of human PPP2R5E

**Applications:** WB,ICC/IF

**Recommended Dilutions:** WB: 1/500-1/1000 IF: 1/50-1/200

**Host Species:** Rabbit

**Clonality:** Rabbit Monoclonal

**Clone ID:** R06-4E6

**MW:** Calculated MW: 55 kDa; Observed MW: 55 kDa

**Isotype:** IgG

**Purification:** Affinity Purified

**Species Reactivity:** Human,Rat

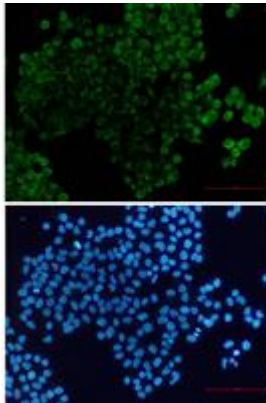
**Conjugation:** Unconjugated

**Modification:** Unmodified

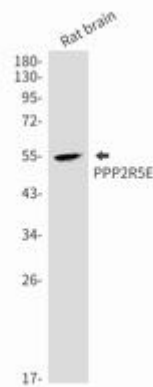
**Constituents:** PBS (without Mg<sup>2+</sup> and Ca<sup>2+</sup>), pH 7.3 containing 50% glycerol, 0.5% BSA and 0.02% sodium azide

**Research Areas:** Neuroscience

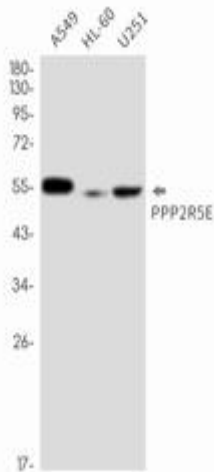
**Storage & Shipping:** Store at -20°C. Avoid repeated freezing and thawing



Immunocytochemistry analysis of PPP2R5E (green) in HeLa using PPP2R5E antibody, and DAPI (blue)



Western blot analysis of PPP2R5E in rat brain lysates using PPP2R5E antibody.



Western blot analysis of PPP2R5E in A549, HL-60, U251 lysates using PPP2R5E antibody.