

## PPP2CB RABBIT PAB

**Cat.#:** S220175

**Product Name:** Anti-PPP2CB Rabbit Polyclonal Antibody

**Synonyms:** PP2CB, PP2Abeta

**UNIPROT ID:** P62714 (Gene Accession - NP\_001009552 )

**Background:** This gene encodes the phosphatase 2A catalytic subunit. Protein phosphatase 2A is one of the four major Ser/Thr phosphatases, and it is implicated in the negative control of cell growth and division. It consists of a common heteromeric core enzyme, which is composed of a catalytic subunit and a constant regulatory subunit, that associates with a variety of regulatory subunits. This gene encodes a beta isoform of the catalytic subunit.

**Immunogen:** Synthetic peptide of human PPP2CB

**Applications:** ELISA, IHC

**Recommended Dilutions:** IHC: 100-300; ELISA: 2000-10000

**Host Species:** Rabbit

**Clonality:** Rabbit Polyclonal

**Isotype:** Immunogen-specific rabbit IgG

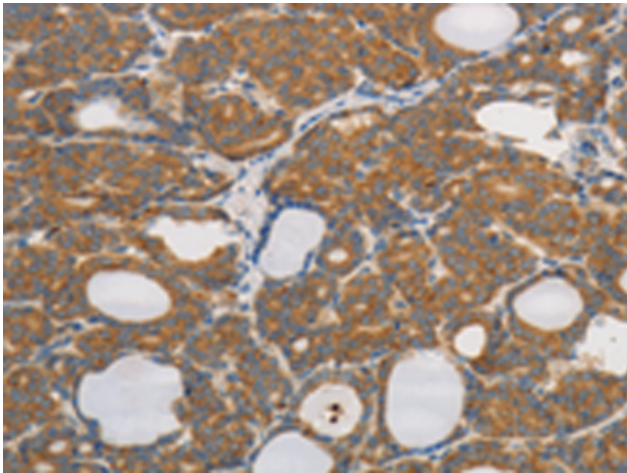
**Purification:** Antigen affinity purification

**Species Reactivity:** Human, Mouse, Rat

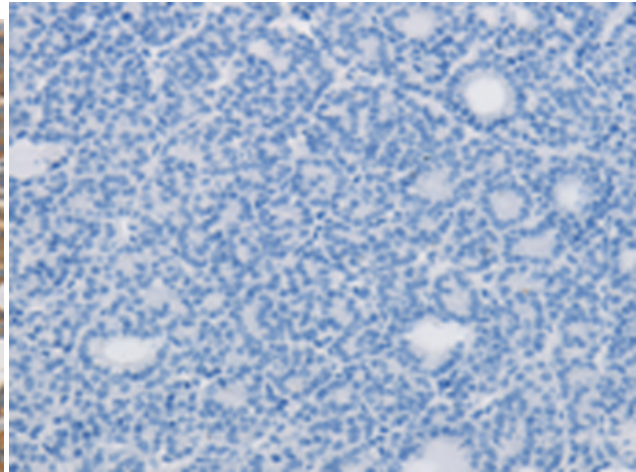
**Constituents:** PBS (without Mg<sup>2+</sup> and Ca<sup>2+</sup>), pH 7.4, 150 mM NaCl, 0.05% Sodium Azide and 40% glycerol

**Research Areas:** Signal Transduction

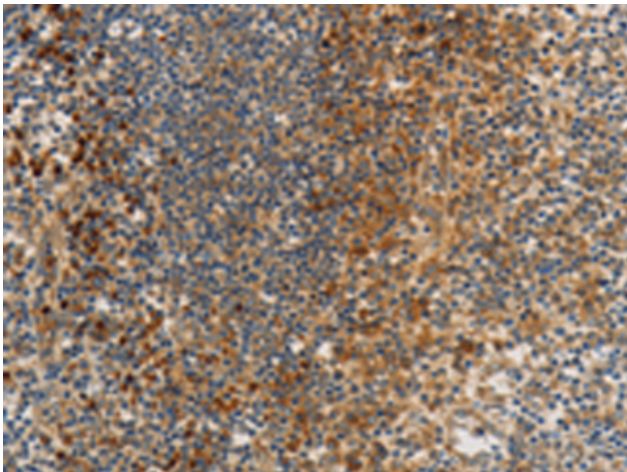
**Storage & Shipping:** Store at -20°C. Avoid repeated freezing and thawing



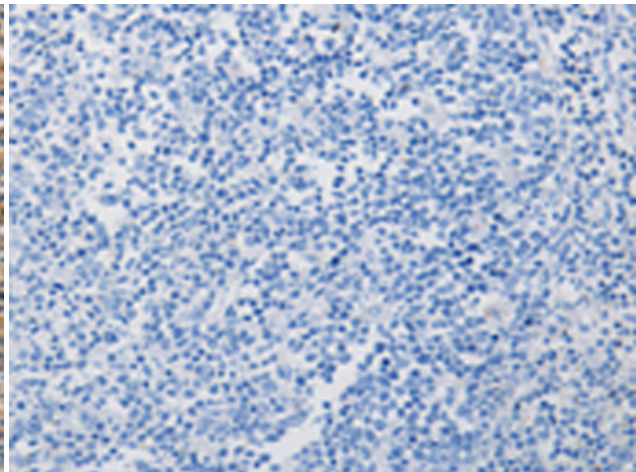
Immunohistochemistry analysis of paraffin embedded Human thyroid cancer tissue using 220175(PPP2CB Antibody) at a dilution of 1/80(Cytoplasm).



In comparison with the IHC on the left, the same paraffin-embedded Human thyroid cancer tissue is first treated with the synthetic peptide and then with 220175(Anti-PPP2CB Antibody) at dilution 1/80.



The image on the left is immunohistochemistry of paraffin-embedded Human tonsil tissue using 220175(Anti-PPP2CB Antibody) at a dilution of 1/80.



In comparison with the IHC on the left, the same paraffin-embedded Human tonsil tissue is first treated with synthetic peptide and then with D261085(Anti-PPP2CB Antibody) at dilution 1/80.