

PPP1CC RABBIT PAB

Cat.#: S220827

Product Name: Anti-PPP1CC Rabbit Polyclonal Antibody

Synonyms: PP1C; PP-1G; PPP1G

UNIPROT ID: P36873 (Gene Accession - NP_002701)

Background: The protein encoded by this gene belongs to the protein phosphatase family, PP1 subfamily. PP1 is an ubiquitous serine/threonine phosphatase that regulates many cellular processes, including cell division. It is expressed in mammalian cells as three closely related isoforms, alpha, beta/delta and gamma, which have distinct localization patterns. This gene encodes the gamma isozyme. Alternatively spliced transcript variants encoding different isoforms have been found for this gene.

Immunogen: Synthetic peptide of human PPP1CC

Applications: ELISA, WB, IHC

Recommended Dilutions: IHC: 100-300;WB: 1000-5000;ELISA: 2000-10000

Host Species: Rabbit

Clonality: Rabbit Polyclonal

Isotype: Immunogen-specific rabbit IgG

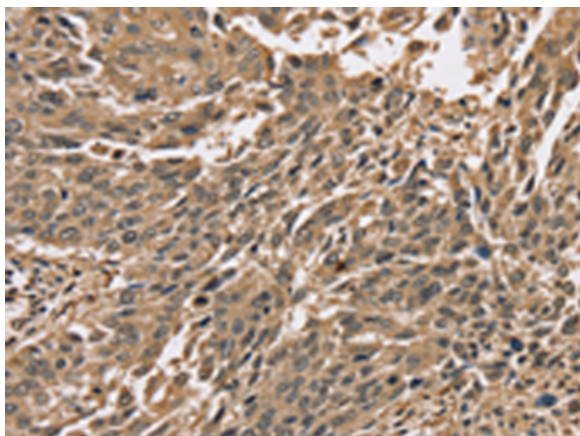
Purification: Antigen affinity purification

Species Reactivity: Human, Mouse, Rat

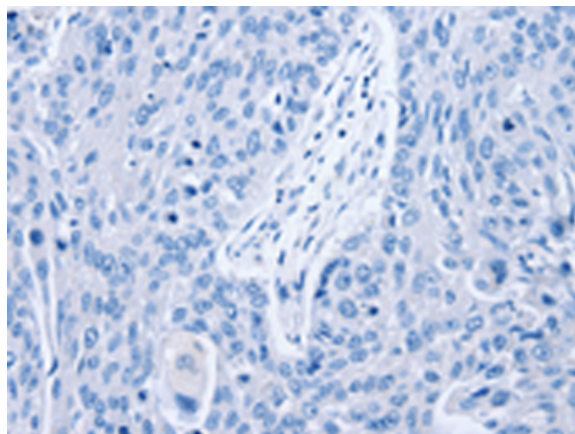
Constituents: PBS (without Mg²⁺ and Ca²⁺), pH 7.4, 150 mM NaCl, 0.05% Sodium Azide and 40% glycerol

Research Areas: Metabolism, Signal Transduction, Epigenetics and Nuclear Signaling, Cancer

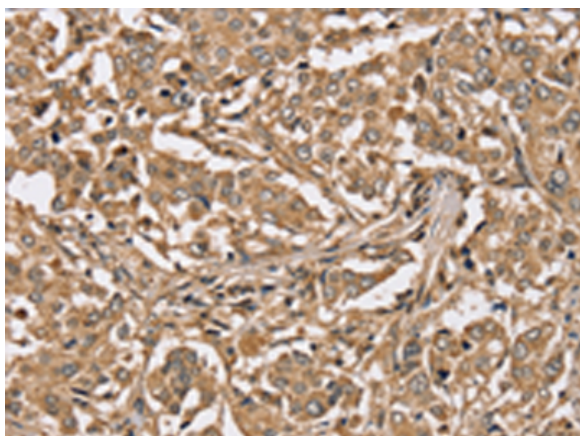
Storage & Shipping: Store at -20°C. Avoid repeated freezing and thawing



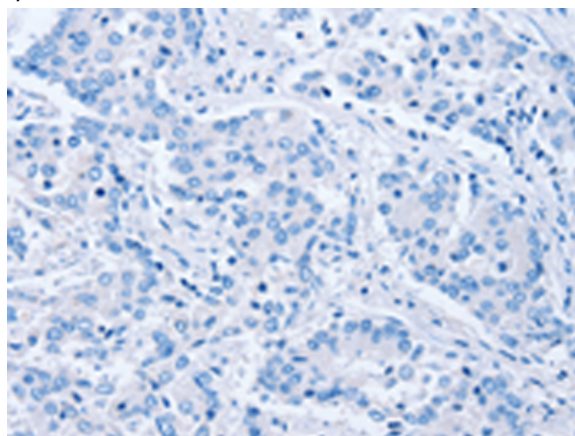
Immunohistochemistry analysis of paraffin embedded Human lung cancer tissue using 220827(PPPICC Antibody) at a dilution of 1/40(Cytoplasm or Nucleus).



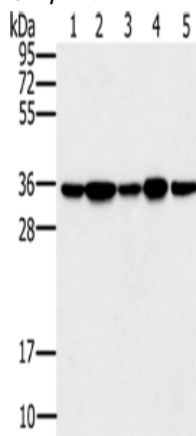
In comparison with the IHC on the left, the same paraffin-embedded Human lung cancer tissue is first treated with the synthetic peptide and then with 220827(Anti-PPPICC Antibody) at dilution 1/40.



The image on the left is immunohistochemistry of paraffin-embedded Human liver cancer tissue using 220827(Anti-PPPICC Antibody) at a dilution of 1/40.



In comparison with the IHC on the left, the same paraffin-embedded Human liver cancer tissue is first treated with synthetic peptide and then with D262074(Anti-PPPICC Antibody) at dilution 1/40.



Gel: 10%SDS-PAGE, Lysate: 40 μ g;
 Lane 1-5: Jurkat cells, 293T cells, HeLa cells, mouse brain tissue, K562 cells;
 Primary antibody: 220827(PPPICC Antibody) at dilution 1/200;
 Secondary antibody: Goat anti rabbit IgG at 1/8000 dilution;
 Exposure time: 1 second



Product Description

Pioneering GTPase and Oncogene Product Development since 2010
