

## PPM1M RABBIT PAB

**Cat.#:** S219284

**Product Name:** Anti-PPM1M Rabbit Polyclonal Antibody

**Synonyms:** PP2CE; PP2Ceta; PP2C-eta

**UNIPROT ID:** Q96MI6 (Gene Accession - BC009644 )

**Background:** PPM1M is a member of the PP2C family of Ser/Thr protein phosphatases. PP2C family members are known to be negative regulators of cell stress response pathways. This phosphatase was identified as an interacting protein of Rho guanine nucleotide exchange factors (PIX). PIX proteins are regulators of p21/Cdc42/Rac1-activated kinase 1 (PAK1), a protein kinase mediating biological effects downstream of Rho GTPases. This phosphatase has been shown to block the effects of PAK, and thus inhibit actin stress fiber breakdown and morphological changes driven by cell division cycle 42 (CDC42).

**Immunogen:** Fusion protein of human PPM1M

**Applications:** ELISA, IHC

**Recommended Dilutions:** IHC: 100-300; ELISA: 5000-10000

**Host Species:** Rabbit

**Clonality:** Rabbit Polyclonal

**Isotype:** Immunogen-specific rabbit IgG

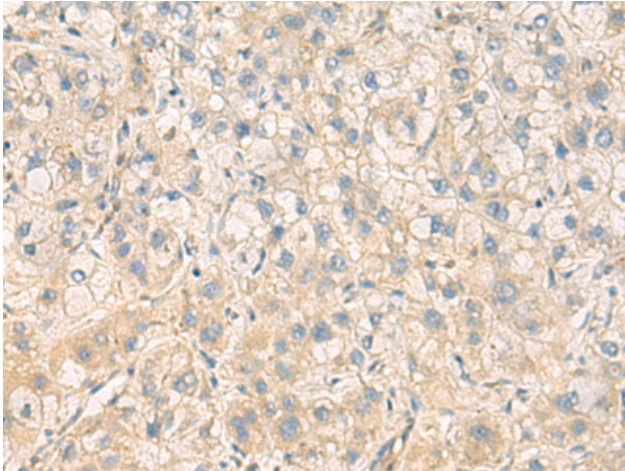
**Purification:** Antigen affinity purification

**Species Reactivity:** Human, Mouse

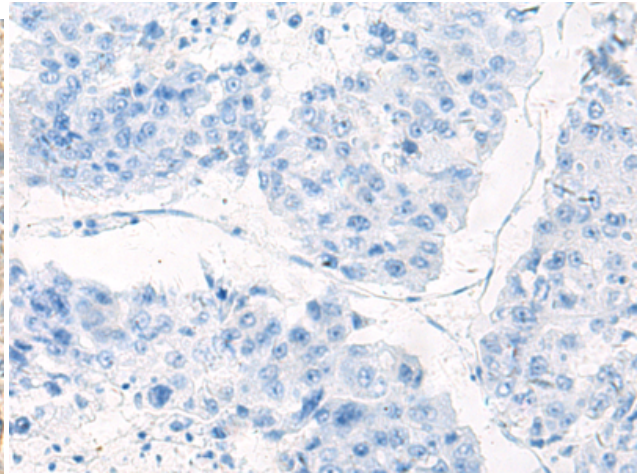
**Constituents:** PBS (without Mg<sup>2+</sup> and Ca<sup>2+</sup>), pH 7.4, 150 mM NaCl, 0.05% Sodium Azide and 40% glycerol

**Research Areas:** Signal Transduction

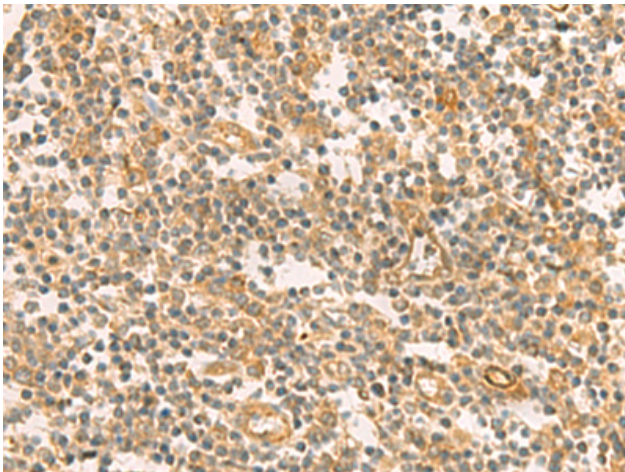
**Storage & Shipping:** Store at -20°C. Avoid repeated freezing and thawing



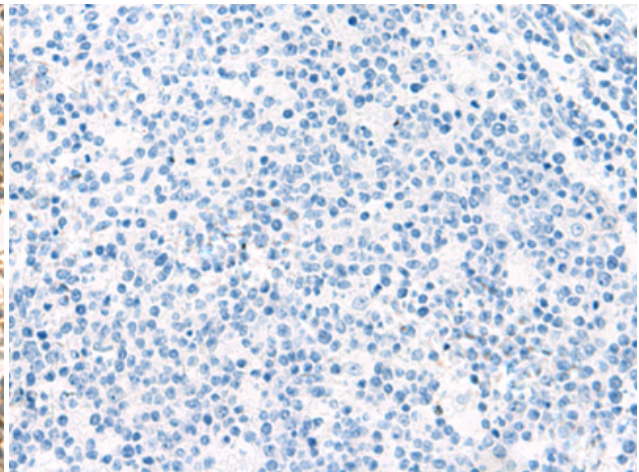
Immunohistochemistry analysis of paraffin embedded Human liver cancer tissue using 219284 (PPMIM Antibody) at a dilution of 1/100 (Cytoplasm).



In comparison with the IHC on the left, the same paraffin-embedded Human liver cancer tissue is first treated with the fusion protein and then with 219284 (Anti-PPMIM Antibody) at dilution 1/100.



The image on the left is immunohistochemistry of paraffin-embedded Human tonsil tissue using 219284 (Anti-PPMIM Antibody) at a dilution of 1/100.



In comparison with the IHC on the left, the same paraffin-embedded Human tonsil tissue is first treated with fusion protein and then with D226205 (Anti-PPMIM Antibody) at dilution 1/100.