

PPM1K RABBIT PAB

Cat.#: S219360

Product Name: Anti-PPM1K Rabbit Polyclonal Antibody

Synonyms: BDP; PTMP; PP2Cm; MSUDMV; PP2Ckappa; UG0882E07

UNIPROT ID: Q8N3J5 (Gene Accession - BC037552)

Background: This gene encodes a member of the PPM family of Mn^{2+}/Mg^{2+} -dependent protein phosphatases. The encoded protein, essential for cell survival and development, is targeted to the mitochondria where it plays a key role in regulation of the mitochondrial permeability transition pore.

Immunogen: Fusion protein of human PPM1K

Applications: ELISA, IHC

Recommended Dilutions: IHC: 25-50; ELISA: 5000-10000

Host Species: Rabbit

Clonality: Rabbit Polyclonal

Isotype: Immunogen-specific rabbit IgG

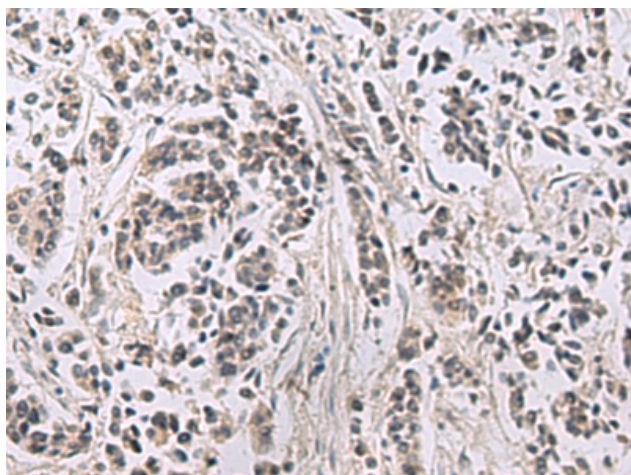
Purification: Antigen affinity purification

Species Reactivity: Human, Mouse

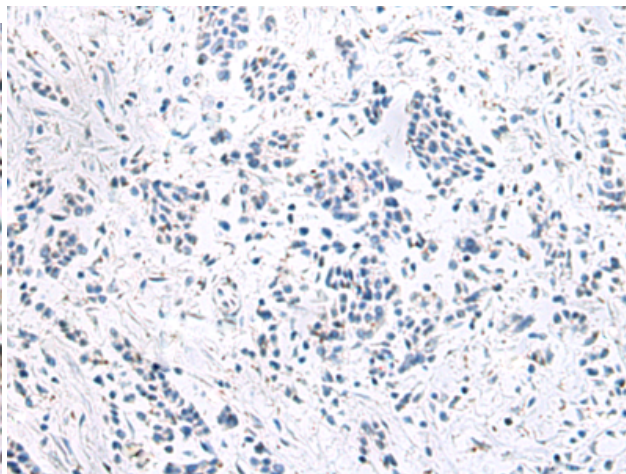
Constituents: PBS (without Mg^{2+} and Ca^{2+}), pH 7.4, 150 mM NaCl, 0.05% Sodium Azide and 40% glycerol

Research Areas: Signal Transduction, Metabolism, Cardiovascular

Storage & Shipping: Store at $-20^{\circ}C$. Avoid repeated freezing and thawing



Immunohistochemistry analysis of paraffin embedded Human breast cancer tissue using 219360(PPM1K Antibody) at a dilution of 1/40(Cytoplasm).



In comparison with the IHC on the left, the same paraffin-embedded Human breast cancer tissue is first treated with the fusion protein and then with 219360(Anti-PPM1K Antibody) at dilution 1/40.