

## PPM1D RABBIT PAB

**Cat.#:** S216877

**Product Name:** Anti-PPM1D Rabbit Polyclonal Antibody

**Synonyms:** WIPI; PP2C-DELTA

**UNIPROT ID:** O15297 (Gene Accession - BC033893 )

**Background:** The protein encoded by this gene is a member of the PP2C family of Ser/Thr protein phosphatases. PP2C family members are known to be negative regulators of cell stress response pathways. The expression of this gene is induced in a p53-dependent manner in response to various environmental stresses. While being induced by tumor suppressor protein TP53/p53, this phosphatase negatively regulates the activity of p38 MAP kinase, MAPK/p38, through which it reduces the phosphorylation of p53, and in turn suppresses p53-mediated transcription and apoptosis. This phosphatase thus mediates a feedback regulation of p38-p53 signaling that contributes to growth inhibition and the suppression of stress induced apoptosis. This gene is located in a chromosomal region known to be amplified in breast cancer. The amplification of this gene has been detected in both breast cancer cell line and primary breast tumors, which suggests a role of this gene in cancer development.

**Immunogen:** Fusion protein of human PPM1D

**Applications:** ELISA, WB, IHC

**Recommended Dilutions:** IHC: 40-200;WB: 200-1000;ELISA: 2000-5000

**Host Species:** Rabbit

**Clonality:** Rabbit Polyclonal

**Isotype:** Immunogen-specific rabbit IgG

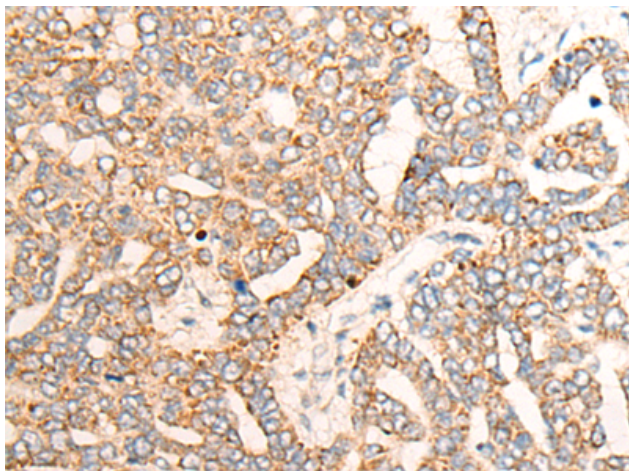
**Purification:** Antigen affinity purification

**Species Reactivity:** Human, Mouse

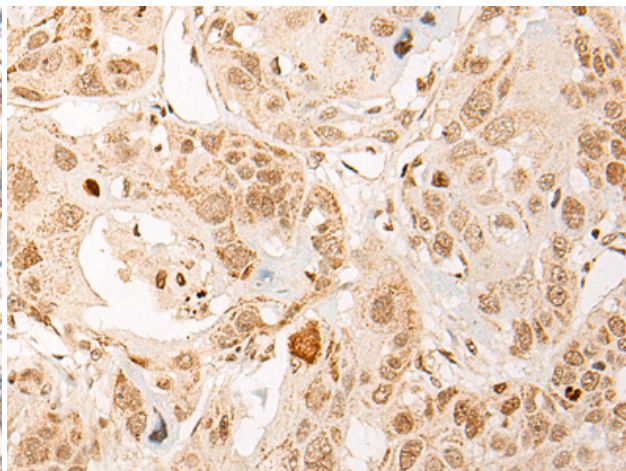
**Constituents:** PBS (without Mg<sup>2+</sup> and Ca<sup>2+</sup>), pH 7.4, 150 mM NaCl, 0.05% Sodium Azide and 40% glycerol

**Research Areas:** Signal Transduction, Cancer

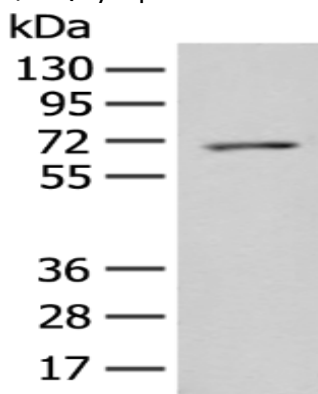
**Storage & Shipping:** Store at -20°C. Avoid repeated freezing and thawing



Immunohistochemistry analysis of paraffin-embedded Human liver cancer tissue using 216877 (PPMID Antibody) at a dilution of 1/50 (Cytoplasm or Nucleus).



Immunohistochemistry analysis of paraffin-embedded Human esophagus cancer tissue using 216877 (Anti-PPMID Antibody) at a dilution of 1/50.



Gel: 8% SDS-PAGE, Lysate: 40  $\mu$ g;  
Lane: Human placenta tissue lysate;  
Primary antibody: 216877 (PPMID Antibody) at dilution 1/200;  
Secondary antibody: Goat anti rabbit IgG at 1/8000 dilution;  
Exposure time: 30 seconds