

## PPCEL RABBIT MAB

**Cat.#:** N263503

**Product Name:** Anti-PPCEL Rabbit Monoclonal Antibody

**Synonyms:** CMS22; Prolylendopeptidase-like

**UNIPROT ID:** Q4J6C6

**Background:** Serine peptidase whose precise substrate specificity remains unclear.

**Immunogen:** A synthetic peptide of human PPCEL/PREPL

**Applications:** WB,ICC/IF,IP

**Recommended Dilutions:** WB: 1/500-1/1000 IF: 1/50-1/200 IP: 1/20

**Host Species:** Rabbit

**Clonality:** Rabbit Monoclonal

**Clone ID:** R02-318

**MW:** Calculated MW: 84 kDa; Observed MW: 72 kDa

**Isotype:** IgG

**Purification:** Affinity Purified

**Species Reactivity:** Human,Mouse,Rat

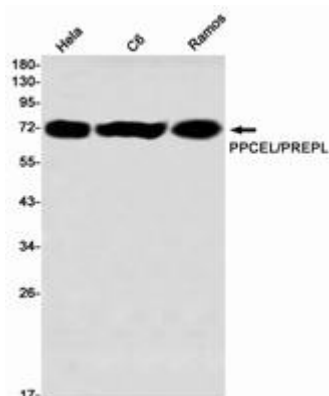
**Conjugation:** Unconjugated

**Modification:** Unmodified

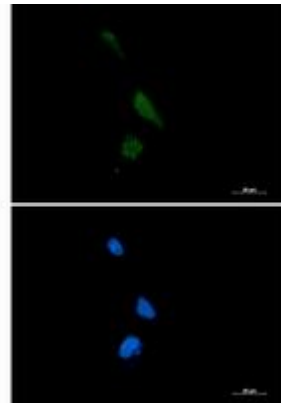
**Constituents:** PBS (without Mg<sup>2+</sup> and Ca<sup>2+</sup>), pH 7.3 containing 50% glycerol, 0.5% BSA and 0.02% sodium azide

**Research Areas:** -

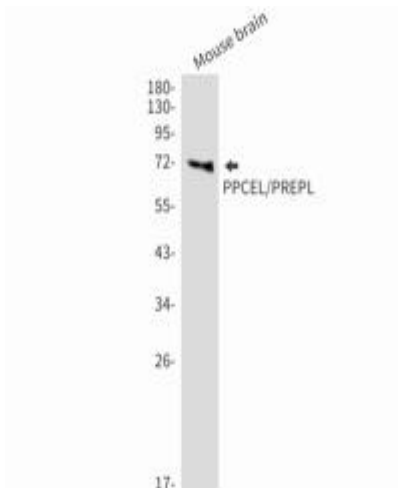
**Storage & Shipping:** Store at -20°C. Avoid repeated freezing and thawing



Western blot analysis of PPCEL/PREPL in HeLa, C6, Ramos lysates using PPCEL/PREPL antibody



Immunocytochemistry analysis of PPCEL (green) in U87-MG using PPCEL antibody, and DAPI (blue).



Western blot analysis of PPCEL/PREPL in mouse brain lysates using PPCEL/PREPL antibody.