

PP2A ALPHA/BETA RABBIT MAB

Cat.#: N262745

Product Name: Anti-PP2A alpha/beta Rabbit Monoclonal Antibody

Synonyms: PPP2CA; Serine/threonine-protein phosphatase 2A catalytic subunit alpha isoform; PP2A-alpha; Replication protein C; RP-C

UNIPROT ID: P67775

Background: PP2A is the major phosphatase for microtubule-associated proteins (MAPs). PP2A can modulate the activity of phosphorylase B kinase casein kinase 2, mitogen-stimulated S6 kinase, and MAP-2 kinase. Cooperates with SGOL2 to protect centromeric cohesin from separase-mediated cleavage in oocytes specifically during meiosis I (By similarity). Can dephosphorylate SV40 large T antigen and p53/TP53. Activates RAF1 by dephosphorylating it at 'Ser-259'.

Immunogen: A synthetic peptide of human PP2A alpha

Applications: WB,IP

Recommended Dilutions: WB: 1/500-1/1000 IP: 1/20

Host Species: Rabbit

Clonality: Rabbit Monoclonal

Clone ID: R06-8A4

MW: Calculated MW: 36 kDa; Observed MW: 36 kDa

Isotype: IgG

Purification: Affinity Purified

Species Reactivity: Human,Mouse,Rat

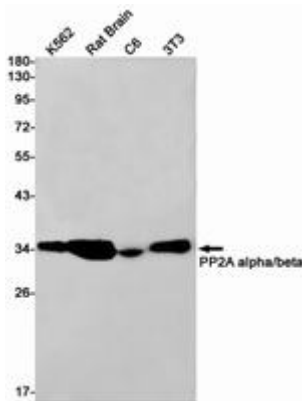
Conjugation: Unconjugated

Modification: Unmodified

Constituents: PBS (without Mg²⁺ and Ca²⁺), pH 7.3 containing 50% glycerol, 0.5% BSA and 0.02% sodium azide

Research Areas: Cell Biology

Storage & Shipping: Store at -20°C. Avoid repeated freezing and thawing



Western blot analysis of PP2A alpha/beta in K562, rat Brain, C6, 3T3 lysates using PP2A alpha/beta antibody.