

POPDC2 RABBIT PAB

Cat.#: S219595

Product Name: Anti-POPDC2 Rabbit Polyclonal Antibody

Synonyms: POP2

UNIPROT ID: Q9HBU9 (Gene Accession - BC044929)

Background: This gene encodes a member of the POP family of proteins which contain three putative transmembrane domains. This membrane associated protein is predominantly expressed in skeletal and cardiac muscle, and may have an important function in these tissues.

Immunogen: Fusion protein of human POPDC2

Applications: ELISA, IHC

Recommended Dilutions: IHC: 50-200; ELISA: 5000-10000

Host Species: Rabbit

Clonality: Rabbit Polyclonal

Isotype: Immunogen-specific rabbit IgG

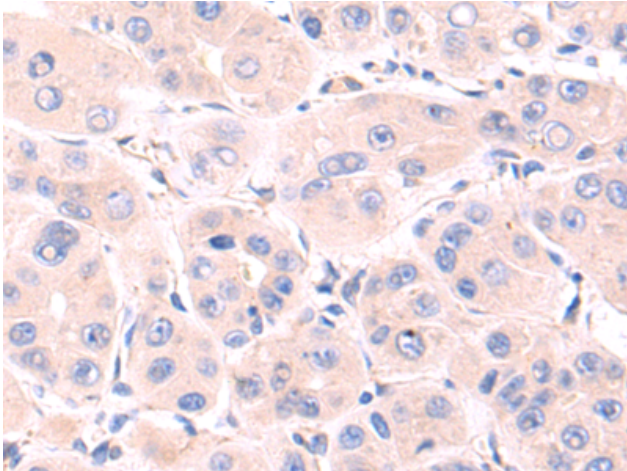
Purification: Antigen affinity purification

Species Reactivity: Human, Mouse

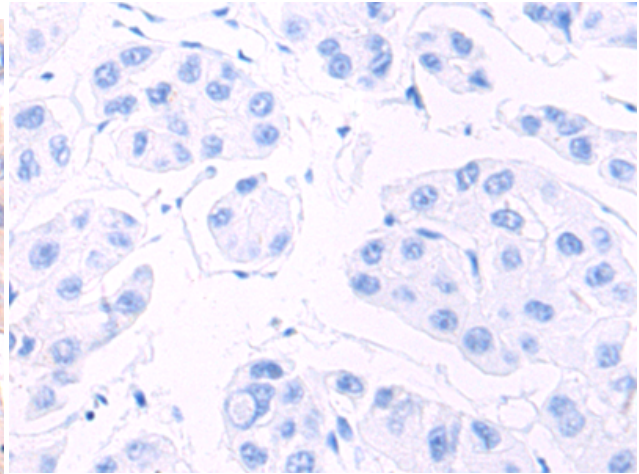
Constituents: PBS (without Mg²⁺ and Ca²⁺), pH 7.4, 150 mM NaCl, 0.05% Sodium Azide and 40% glycerol

Research Areas: Epigenetics and Nuclear Signaling

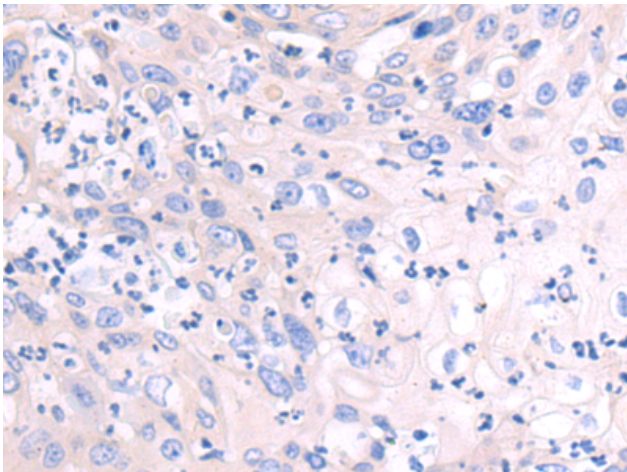
Storage & Shipping: Store at -20°C. Avoid repeated freezing and thawing



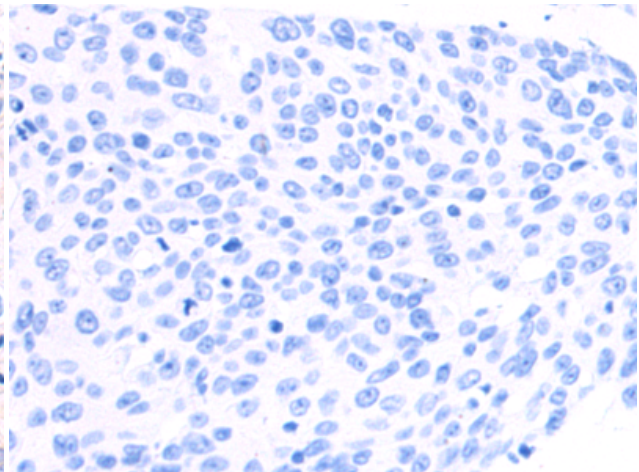
Immunohistochemistry analysis of paraffin embedded Human liver cancer tissue using 219595 (POPDC2 Antibody) at a dilution of 1/70 (Cytoplasm).



In comparison with the IHC on the left, the same paraffin-embedded Human liver cancer tissue is first treated with the fusion protein and then with 219595 (Anti-POPDC2 Antibody) at dilution 1/70.



The image on the left is immunohistochemistry of paraffin-embedded Human bladder cancer tissue using 219595 (Anti-POPDC2 Antibody) at a dilution of 1/70.



In comparison with the IHC on the left, the same paraffin-embedded Human bladder cancer tissue is first treated with fusion protein and then with D227876 (Anti-POPDC2 Antibody) at dilution 1/70.