

## PON1 RABBIT MAB

**Cat.#:** N262741

**Product Name:** Anti-PON1 Rabbit Monoclonal Antibody

**Synonyms:** A esterase 1; Arylesterase 1; ESA; MVCD5; Paraoxonase 1; PON1

**UNIPROT ID:** P27169

**Background:** Hydrolyzes the toxic metabolites of a variety of organophosphorus insecticides. Capable of hydrolyzing a broad spectrum of organophosphate substrates and lactones, and a number of aromatic carboxylic acid esters. Mediates an enzymatic protection of low density lipoproteins against oxidative modification and the consequent series of events leading to atheroma formation.

**Immunogen:** A synthetic peptide of human PON1

**Applications:** WB,IP

**Recommended Dilutions:** WB: 1/500-1/1000 IP: 1/20

**Host Species:** Rabbit

**Clonality:** Rabbit Monoclonal

**Clone ID:** R07-411

**MW:** Calculated MW: 40 kDa; Observed MW: 40 kDa

**Isotype:** IgG

**Purification:** Affinity Purified

**Species Reactivity:** Human,Mouse,Rat

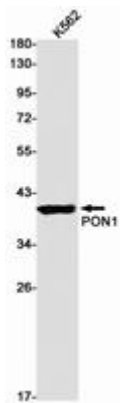
**Conjugation:** Unconjugated

**Modification:** Unmodified

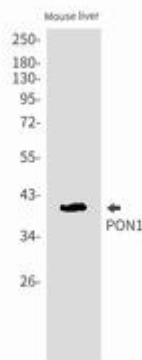
**Constituents:** PBS (without Mg<sup>2+</sup> and Ca<sup>2+</sup>), pH 7.3 containing 50% glycerol, 0.5% BSA and 0.02% sodium azide

**Research Areas:** Neuroscience

**Storage & Shipping:** Store at -20°C. Avoid repeated freezing and thawing



Western blot analysis of PON1 in K562 lysates using PON1 antibody.



Western blot analysis of PON1 in mouse liver lysates using PON1 antibody.