

## POM121 RABBIT PAB

**Cat.#:** S218937

**Product Name:** Anti-POM121 Rabbit Polyclonal Antibody

**Synonyms:** P145; POM121A

**UNIPROT ID:** Q96HA1 (Gene Accession - BC008794 )

**Background:** This gene encodes a transmembrane protein that localizes to the inner nuclear membrane and forms a core component of the nuclear pore complex which mediates transport to and from the nucleus. The encoded protein may anchor this complex to the nuclear envelope. There are multiple related genes and pseudogenes for this gene on chromosomes 5, 7, 15, and 22. Alternatively spliced transcript variants encoding different isoforms have been observed.

**Immunogen:** Fusion protein of human POM121

**Applications:** ELISA, IHC

**Recommended Dilutions:** IHC: 50–300; ELISA: 5000–10000

**Host Species:** Rabbit

**Clonality:** Rabbit Polyclonal

**Isotype:** Immunogen-specific rabbit IgG

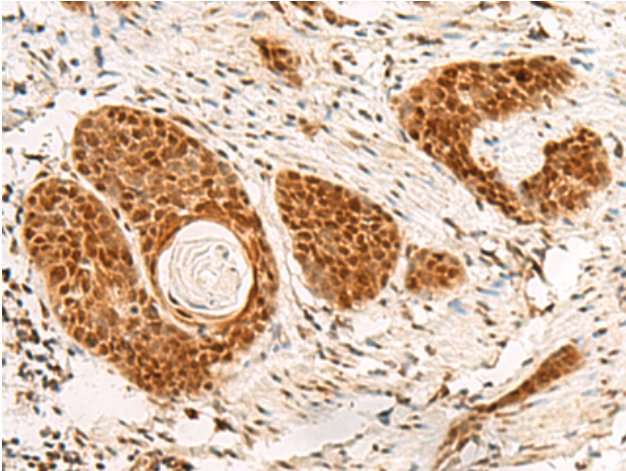
**Purification:** Antigen affinity purification

**Species Reactivity:** Human

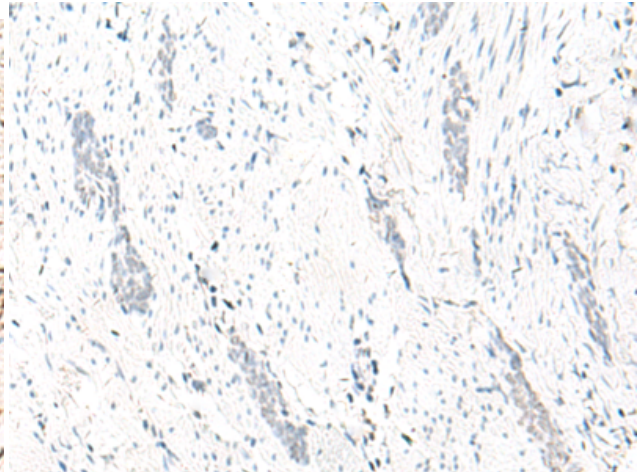
**Constituents:** PBS (without Mg<sup>2+</sup> and Ca<sup>2+</sup>), pH 7.4, 150 mM NaCl, 0.05% Sodium Azide and 40% glycerol

**Research Areas:** Signal Transduction

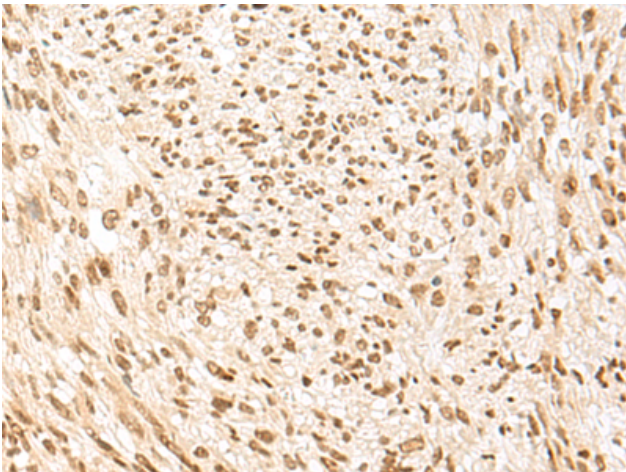
**Storage & Shipping:** Store at -20°C. Avoid repeated freezing and thawing



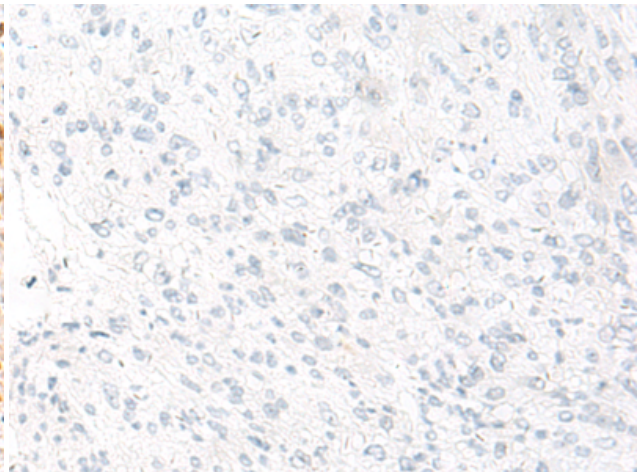
Immunohistochemistry analysis of paraffin embedded Human esophagus cancer tissue using 218937(POM121 Antibody) at a dilution of 1/75(Nucleus).



In comparison with the IHC on the left, the same paraffin-embedded Human esophagus cancer tissue is first treated with the fusion protein and then with 218937(Anti-POM121 Antibody) at dilution 1/75.



The image on the left is immunohistochemistry of paraffin-embedded Human liver cancer tissue using 218937(Anti-POM121 Antibody) at a dilution of 1/75.



In comparison with the IHC on the left, the same paraffin-embedded Human liver cancer tissue is first treated with fusion protein and then with D225542(Anti-POM121 Antibody) at dilution 1/75.