

## POLR1C RABBIT PAB

**Cat.#:** S218650

**Product Name:** Anti-POLR1C Rabbit Polyclonal Antibody

**Synonyms:** AC40; RPA5; TCS3; HLD11; RPA39; RPA40; RPAC1; RPC40

**UNIPROT ID:** O15160 (Gene Accession - BC008863 )

**Background:** The protein encoded by this gene is a subunit of both RNA polymerase I and RNA polymerase III complexes. The encoded protein is part of the Pol core element. Mutations in this gene have been associated with Treacher Collins syndrome (TCS) and hypomyelinating leukodystrophy 11. Alternative splicing results in multiple transcript variants.

**Immunogen:** Fusion protein of human POLR1C

**Applications:** ELISA, IHC

**Recommended Dilutions:** IHC: 25-100; ELISA: 5000-10000

**Host Species:** Rabbit

**Clonality:** Rabbit Polyclonal

**Isotype:** Immunogen-specific rabbit IgG

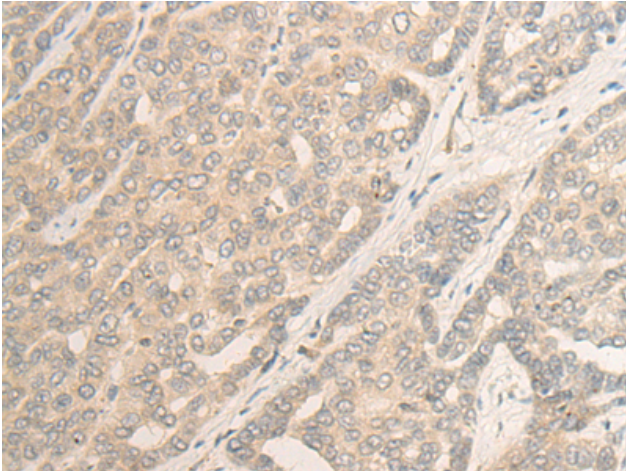
**Purification:** Antigen affinity purification

**Species Reactivity:** Human, Mouse

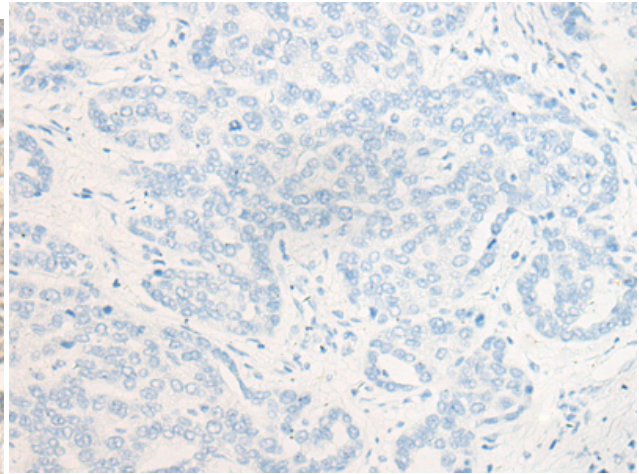
**Constituents:** PBS (without Mg<sup>2+</sup> and Ca<sup>2+</sup>), pH 7.4, 150 mM NaCl, 0.05% Sodium Azide and 40% glycerol

**Research Areas:** Epigenetics and Nuclear Signaling

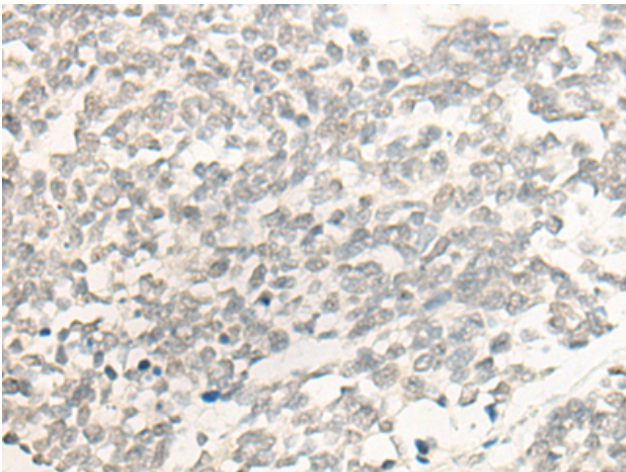
**Storage & Shipping:** Store at -20°C. Avoid repeated freezing and thawing



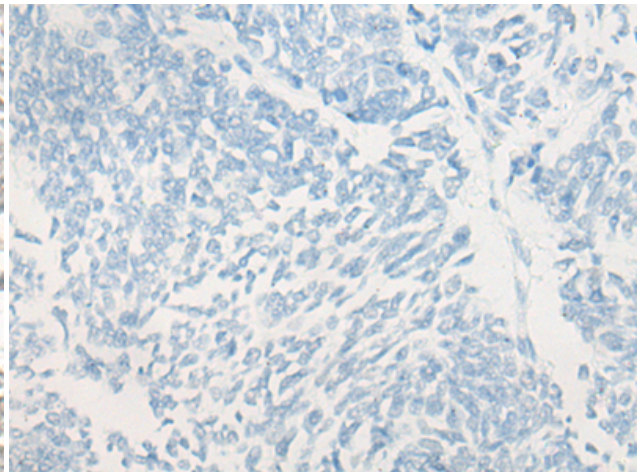
Immunohistochemistry analysis of paraffin embedded Human liver cancer tissue using 218650 (POLR1C Antibody) at a dilution of 1/20 (Cytoplasm or Nucleus).



In comparison with the IHC on the left, the same paraffin-embedded Human liver cancer tissue is first treated with the fusion protein and then with 218650 (Anti-POLR1C Antibody) at dilution 1/20.



The image on the left is immunohistochemistry of paraffin-embedded Human lung cancer tissue using 218650 (Anti-POLR1C Antibody) at a dilution of 1/20.



In comparison with the IHC on the left, the same paraffin-embedded Human lung cancer tissue is first treated with fusion protein and then with D224872 (Anti-POLR1C Antibody) at dilution 1/20.