

## POLIOVIRUS RECEPTOR RABBIT MAB

**Cat.#:** N263501

**Product Name:** Anti-Poliovirus Receptor Rabbit Monoclonal Antibody

**Synonyms:** PVR; PVS; Poliovirus receptor; Nectin-like protein 5; NECL-5; CD155

**UNIPROT ID:** P15151

**Background:** Mediates NK cell adhesion and triggers NK cell effector functions. Binds two different NK cell receptors: CD96 and CD226. These interactions accumulates at the cell-cell contact site, leading to the formation of a mature immunological synapse between NK cell and target cell.

**Immunogen:** Recombinant protein of human Poliovirus Receptor/PVR

**Applications:** WB,IHC-P

**Recommended Dilutions:** WB: 1/500-1/1000 IHC: 1/50-1/100

**Host Species:** Rabbit

**Clonality:** Rabbit Monoclonal

**Clone ID:** R04-2C7

**MW:** Calculated MW: 45 kDa; Observed MW: 60-80 kDa

**Isotype:** IgG

**Purification:** Affinity Purified

**Species Reactivity:** Human

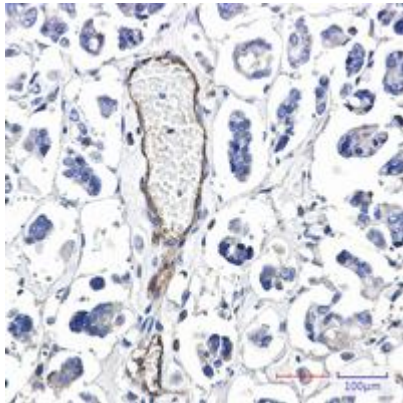
**Conjugation:** Unconjugated

**Modification:** Unmodified

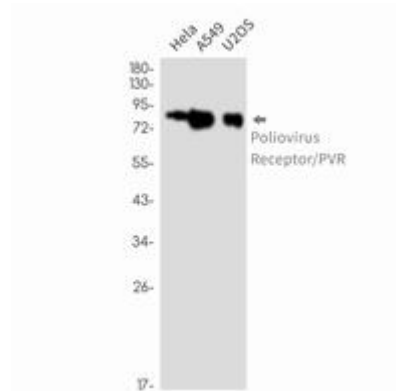
**Constituents:** PBS (without Mg<sup>2+</sup> and Ca<sup>2+</sup>), pH 7.3 containing 50% glycerol, 0.5% BSA and 0.02% sodium azide

**Research Areas:** Immunology

**Storage & Shipping:** Store at -20°C. Avoid repeated freezing and thawing



Immunohistochemistry analysis of paraffin-embedded Human Cholangiocarcinoma using Poliovirus Receptor/PVR antibody. High-pressure and temperature Sodium Citrate pH 6.0 was used for antigen retrieval.



Western blot analysis of Poliovirus Receptor/PVR in Hela, A549, U2OS lysates using Poliovirus Receptor antibody.