

POLE3 RABBIT PAB

Cat.#: S213095

Product Name: Anti-POLE3 Rabbit Polyclonal Antibody

Synonyms: p17; YBL1; CHRAC2; CHRAC17; CHARAC17

UNIPROT ID: Q9NRF9 (Gene Accession - BC003166)

Background: POLE3 is a histone-fold protein that interacts with other histone-fold proteins to bind DNA in a sequence-independent manner. These histone-fold protein dimers combine within larger enzymatic complexes for DNA transcription, replication, and packaging.

Immunogen: Fusion protein of human POLE3

Applications: ELISA, IHC

Recommended Dilutions: IHC: 50-200; ELISA: 5000-10000

Host Species: Rabbit

Clonality: Rabbit Polyclonal

Isotype: Immunogen-specific rabbit IgG

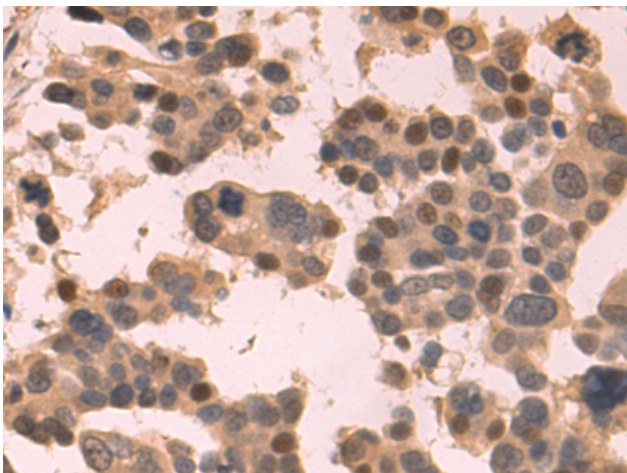
Purification: Antigen affinity purification

Species Reactivity: Human

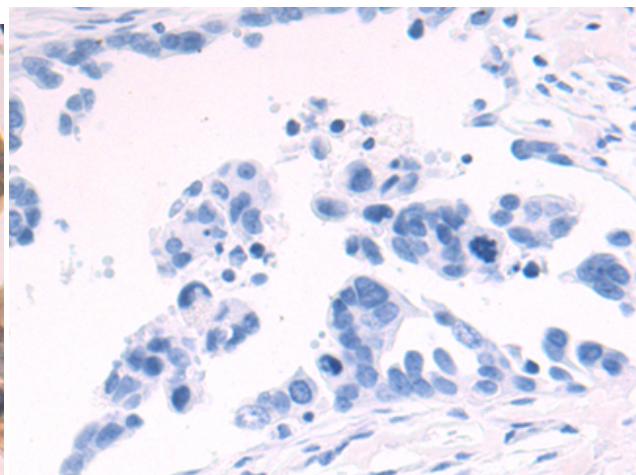
Constituents: PBS (without Mg²⁺ and Ca²⁺), pH 7.4, 150 mM NaCl, 0.05% Sodium Azide and 40% glycerol

Research Areas: Epigenetics and Nuclear Signaling

Storage & Shipping: Store at -20°C. Avoid repeated freezing and thawing



Immunohistochemistry analysis of paraffin embedded Human colorectal cancer tissue using 213095 (POLE3 Antibody) at a dilution of 1/75 (Nucleus and Cytoplasm).



In comparison with the IHC on the left, the same paraffin-embedded Human colorectal cancer tissue is first treated with the fusion protein and then with 213095 (Anti-POLE3 Antibody) at dilution 1/75.