

## POLD1 RABBIT MAB

**Cat.#:** N261616

**Product Name:** Anti-POLD1 Rabbit Monoclonal Antibody

**Synonyms:** CDC2; CRCS10; MDPL; POLD; POLD1

**UNIPROT ID:** P28340

**Background:** Possesses two enzymatic activities: DNA synthesis (polymerase) and an exonucleolytic activity that degrades single stranded DNA in the 3'- to 5'-direction. Required with its accessory proteins (proliferating cell nuclear antigen (PCNA) and replication factor C (RFC) or activator 1) for leading strand synthesis. Also involved in completing Okazaki fragments initiated by the DNA polymerase alpha/primase complex.

**Immunogen:** A synthetic peptide of human DNA Polymerase delta, catalytic subunit

**Applications:** WB,IHC-P,ICC/IF,FC

**Recommended Dilutions:** WB: 1/500-1/1000 IF: 1/50-1/200

**Host Species:** Rabbit

**Clonality:** Rabbit Monoclonal

**Clone ID:** R05-3H1

**MW:** Calculated MW: 124 kDa; Observed MW: 124 kDa

**Isotype:** IgG

**Purification:** Affinity Purified

**Species Reactivity:** Human,Mouse,Rat

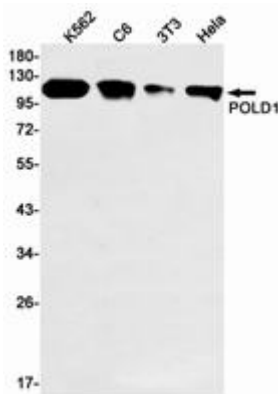
**Conjugation:** Unconjugated

**Modification:** Unmodified

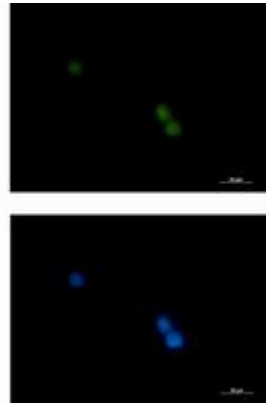
**Constituents:** PBS (without Mg<sup>2+</sup> and Ca<sup>2+</sup>), pH 7.3 containing 50% glycerol, 0.5% BSA and 0.02% sodium azide

**Research Areas:** Epigenetics and Nuclear Signaling

**Storage & Shipping:** Store at -20°C. Avoid repeated freezing and thawing



Western blot analysis of POLD1 in K562, C6, 3T3, HeLa lysates using POLD1 antibody.



Immunocytochemistry analysis of POLD1 (green) in K562 using POLD1 antibody, and DAPI (blue).