

POLB RABBIT PAB

Cat.#: S219468

Product Name: Anti-POLB Rabbit Polyclonal Antibody

Synonyms:

UNIPROT ID: P06746 (Gene Accession - BC106909)

Background: The protein encoded by this gene is a DNA polymerase involved in base excision and repair, also called gap-filling DNA synthesis. The encoded protein, acting as a monomer, is normally found in the cytoplasm, but it translocates to the nucleus upon DNA damage. Several transcript variants of this gene exist, but the full-length nature of only one has been described to date. [provided by RefSeq, Sep 2011]

Immunogen: Fusion protein of human POLB

Applications: ELISA, WB, IHC

Recommended Dilutions: IHC: 100-300;WB: 500-2000;ELISA: 5000-10000

Host Species: Rabbit

Clonality: Rabbit Polyclonal

Isotype: Immunogen-specific rabbit IgG

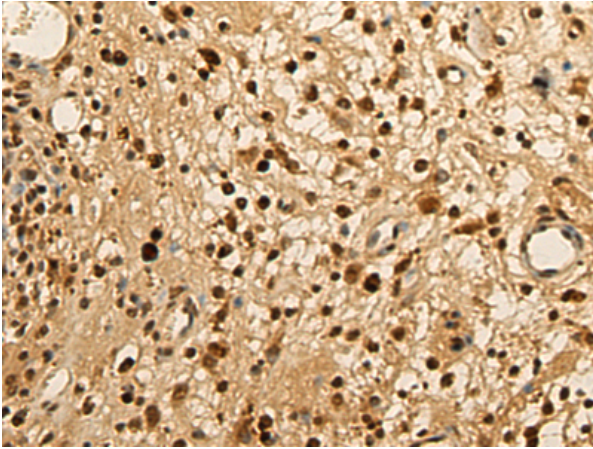
Purification: Antigen affinity purification

Species Reactivity: Human, Mouse, Rat

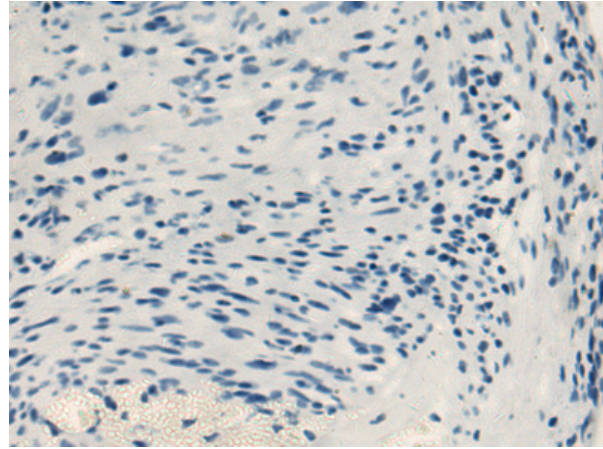
Constituents: PBS (without Mg²⁺ and Ca²⁺), pH 7.4, 150 mM NaCl, 0.05% Sodium Azide and 40% glycerol

Research Areas: Epigenetics and Nuclear Signaling

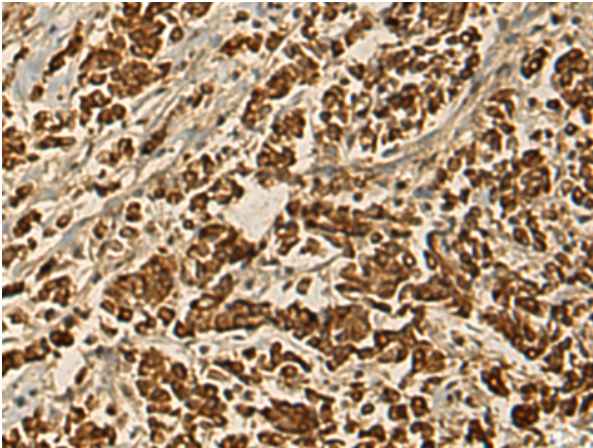
Storage & Shipping: Store at -20°C. Avoid repeated freezing and thawing



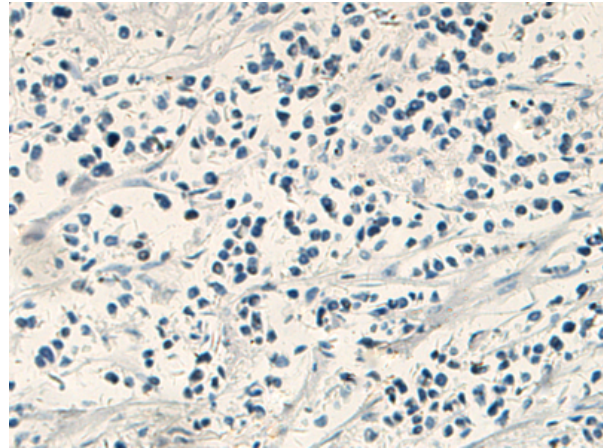
Immunohistochemistry analysis of paraffin embedded Human brain tissue using 219468 (POLB Antibody) at a dilution of 1/135 (Nucleus).



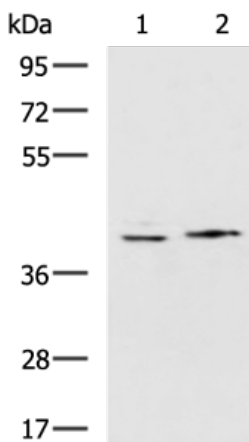
In comparison with the IHC on the left, the same paraffin-embedded Human brain tissue is first treated with the fusion protein and then with 219468 (Anti-POLB Antibody) at dilution 1/135.



The image on the left is immunohistochemistry of paraffin-embedded Human breast cancer tissue using 219468 (Anti-POLB Antibody) at a dilution of 1/135.



In comparison with the IHC on the left, the same paraffin-embedded Human breast cancer tissue is first treated with fusion protein and then with D227211 (Anti-POLB Antibody) at dilution 1/135.



Gel: 8% SDS-PAGE, Lysate: 40 µg;
Lane 1-2: K562, Hela cell lysates;
Primary antibody: 219468 (POLB Antibody) at dilution 1/800;
Secondary antibody: HRP-conjugated Goat anti rabbit IgG at 1/5000 dilution;
Exposure time: 1 minute



Product Description

Pioneering GTPase and Oncogene Product Development since 2010
